

# Industrial Tape Products

**Nashua**<sup>®</sup>  
TAPE PRODUCTS  
PROFESSIONALS' CHOICE

**POLYKEN**<sup>®</sup>

**PATCO**<sup>®</sup>  
PERFORMANCE ENGINEERED TAPES

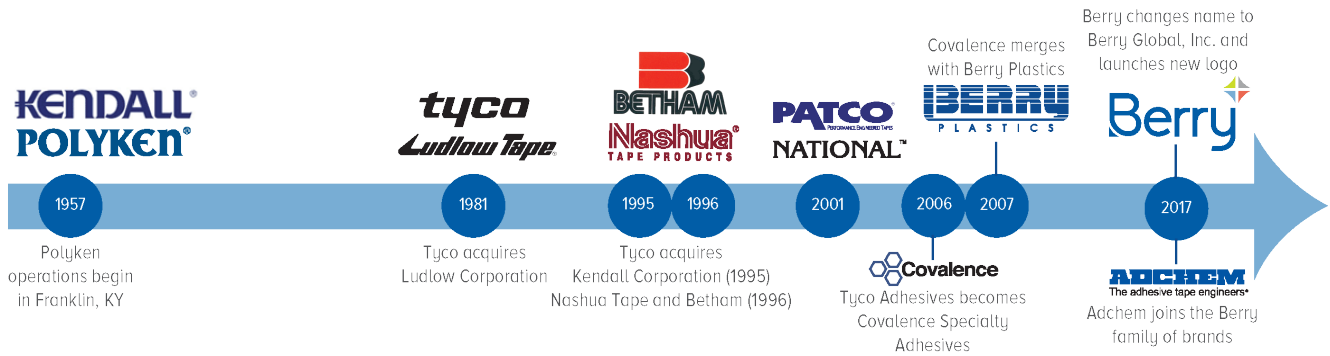


Cloth Duct Tape • Nuclear, Military, and FR Tape • Film Tape - PE, PU, PET, PVC  
Gaffer's Tape • Double-Coated Cloth Tape • Spray Adhesive & Primer • Plumbing & Electrical Tape Foil  
& Insulation Tape Building & Construction Tape • Paper & Finline Masking Tape • Packaging Tape

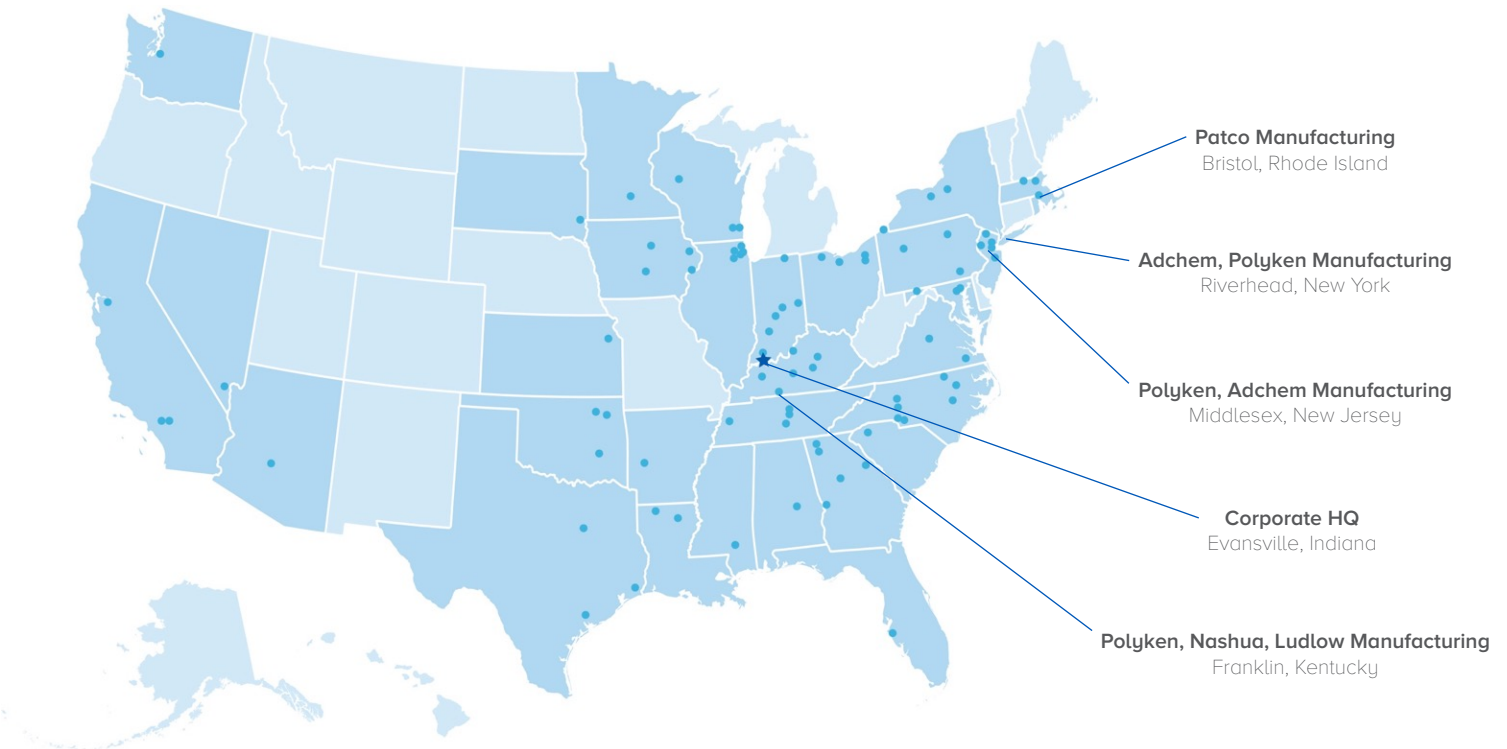
**Berry**

## OVER 60 YEARS OF LEADERSHIP IN PRESSURE-SENSITIVE TAPES

A proud member of the Berry Global family since 2007, we have over 60 years of history in producing some of the industry's most trusted brands of high performance adhesive tape products for industrial, abatement, remediation and safety, convention and hospitality, construction, maintenance, and more.



## EXTENSIVE MANUFACTURING CAPABILITY & EXPERTISE



Polyken®, Nashua®, Patco®, Adchem®, and Ludlow® are registered trademarks of Berry Global, Inc or one of its affiliates.

# Table of Contents

<b>POLYKEN® CLOTH DUCT TAPES</b>	<b>04</b>
<b>NASHUA® CLOTH DUCT TAPES</b>	<b>06</b>
<b>NUCLEAR/MILITARY/FR CLOTH DUCT TAPES</b>	<b>08</b>
<b>GAFFER'S TAPES</b>	<b>09</b>
<b>DOUBLE-COATED CLOTH/CARPET TAPES</b>	<b>10</b>
<b>SPRAY ADHESIVES</b>	<b>11</b>
<b>FILM TAPES</b>	<b>12</b>
Multi-Purpose Film Tapes	12
UV & FR Film Tapes	13
Vapor Barrier & Permanent Bond Film Tapes	14
Short & Long-Term Surface Protection Film Tapes	15
Plumbing & Electrical Tapes	16
PET Film/Splicing Tapes	17
<b>POLYKEN FOIL &amp; INSULATION TAPES</b>	<b>18</b>
<b>NASHUA FOIL &amp; INSULATION TAPES</b>	<b>20</b>
<b>BUILDING &amp; CONSTRUCTION TAPES</b>	<b>22</b>
<b>PAPER MASKING TAPES</b>	<b>24</b>
<b>FINELINE MASKING TAPES</b>	<b>25</b>
<b>PACKAGING &amp; FILAMENT TAPES</b>	<b>26</b>
<b>LUDLOW® TAPES</b>	<b>27</b>
<b>ADCHEM® TAPES</b>	<b>28</b>
Specification Table	29
Duct Tape Selection Guide	30
Film Tape Selection Guide	31
Foil Tape Selection Guide	32
Specification Table	33
Product Index	34

The information presented herein was prepared at BERRY GLOBAL, INC. (25 Forge Parkway Franklin, MA 02038) by qualified technical personnel. To BERRY's knowledge, it is true and accurate. However, the information and recommendations are furnished for these products with the understanding that the purchaser or user, as the case may be, will independently determine that the product is suitable for the intended use, and that such use complies with all applicable federal, state and local laws and regulations. The data are submitted only for the user's information and consideration, and do not constitute a warranty of any kind (including but not limited to a warranty of merchantability or of fitness for a particular purpose), or a representation for which BERRY assumes any legal responsibility.



# Polyken® Cloth Duct Tapes

The Polyken brand is highly recognized by contractors and professionals across multiple industries as the premium source for exceptional, high performance duct tapes. Polyken duct tapes have been engineered to provide the right balance of adhesion, tensile, and shear strength to meet rigorous customer and industry performance requirements for abatement, construction, maintenance, HVAC, and more.



## POLYKEN 203

9 mil Multi-Purpose Grade



EXCELLENT ADHESION AND TACK  
BALANCED TEAR AND TENSILE  
GOOD REMOVABILITY FROM SURFACES  
HANG, SEAM, AND PATCH PE SHEETING.  
BUNDLE, PATCH, SEAM, AND REPAIR.  
COLOR CODING. PLUMBING USES.

Backing/Adhesive	PE Cloth / Natural Rubber	
Thickness	9.0 mil	0.229 mm
Adhesion to Steel	85 oz/in	9.30 N/cm
Tensile	25 lb/in	43.78 N/cm
Operating Temp	40 - 200 °F	4 - 93 °C
Colors	Black, Blue, Brown, Lt Grn, Dk Grn, OD, Red, Silver, Tan, White, Yellow	
Std Sizes	48mm, 72mm x 55M	

## POLYKEN 213

10 mil Clean Removal



EXCELLENT ADHESION AND TACK  
BALANCED TEAR AND TENSILE  
CLEAN REMOVAL FROM MANY SURFACES  
MASKING SURFACES AND HANGING PE SHEETING IN OUTDOOR APPLICATIONS.  
BUNDLE, PATCH, SEAM, AND REPAIR.

Backing/Adhesive	PE Cloth / Natural Rubber	
Thickness	10.0 mil	0.254 mm
Adhesion to Steel	50 oz/in	5.47 N/cm
Tensile	22 lb/in	38.53 N/cm
Operating Temp	40 - 200 °F	4 - 93 °C
Colors	Red	
Std Sizes	48mm x 55M	

## POLYKEN 223

10 mil Multi-Purpose Grade

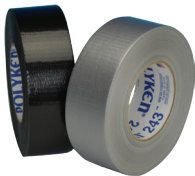


EXCELLENT ADHESION AND TACK  
BALANCED TEAR AND TENSILE  
GOOD REMOVABILITY FROM SURFACES  
HANG, SEAM, AND PATCH PE SHEETING.  
BUNDLE, PATCH, AND REPAIR. COLOR CODING. GENERAL MAINTENANCE.

Backing/Adhesive	PE Cloth / Natural Rubber	
Thickness	10.0 mil	0.254 mm
Adhesion to Steel	90 oz/in	9.85 N/cm
Tensile	25 lb/in	43.78 N/cm
Operating Temp	40 - 200 °F	4 - 93 °C
Colors	Black, Blue, Brown, Lt Green, Green, OD, Red, Silver, Tan, White, Yellow	
Std Sizes	48mm, 72mm x 55M	

## POLYKEN 243

10 mil Multi-Purpose Grade



GOOD ADHESION AND SHEAR STRENGTH  
EXCELLENT CONFORMABILITY  
BONDS TO ROUGH OR SMOOTH SURFACES  
HANG, SEAM, AND PATCH PE SHEETING.  
BUNDLE, PACKAGE, AND SEAL. GENERAL REPAIRS. PLUMBING AND MAINTENANCE.

Backing/Adhesive	PE Cloth / Natural Rubber	
Thickness	10.0 mil	0.254 mm
Adhesion to Steel	75 oz/in	8.21 N/cm
Tensile	24 lb/in	42.03 N/cm
Operating Temp	40 - 200 °F	4 - 93 °C
Colors	Silver, Black	
Std Sizes	48mm, 72mm x 55M	

## POLYKEN 244

10 mil Abatement



EXCELLENT BOND TO PE SHEETING  
CRISP, STRAIGHT TEAR  
RESISTS TWISTING AND CURLING  
PATCH, SEAM, AND HANG PE SHEETING.  
SEALING PE BAGS FOR WASTE REMOVAL.  
GENERAL PURPOSE ABATEMENT USES.

Backing/Adhesive	PE Cloth / Natural Rubber	
Thickness	10.0 mil	0.254 mm
Adhesion to Steel	80 oz/in	8.75 N/cm
Tensile	24 lb/in	42.03 N/cm
Operating Temp	40 - 200 °F	4 - 93 °C
Colors	Teal	
Std Sizes	48mm, 72mm x 55M	

## POLYKEN 251

11 mil Professional Grade



EXCELLENT STRENGTH AND TEAR  
AGGRESSIVE ADHESION TO SURFACES  
RESISTS TWISTING AND CURLING  
DUCT AND JOINT SEALING. PATCHING AND SEALING INSULATION MATERIALS. PATCH AND REPAIR ON METALLIC FINISHES.

Backing/Adhesive	Metalized PE Cloth / Natural Rubber	
Thickness	11.0 mil	0.279 mm
Adhesion to Steel	70 oz/in	7.66 N/cm
Tensile	23 lb/in	40.28 N/cm
Operating Temp	40 - 200 °F	4 - 93 °C
Colors	Metallic	
Std Sizes	48mm, 72mm x 55M	



**POLYKEN 281**  
10.5 mil Moisture Barrier



BONDS WELL TO ITSELF FOR SPIRAL WRAPS  
SUPERIOR MOISTURE RESISTANCE  
EXCELLENT CONFORMABILITY

WATERPROOFING IN AUTOMOTIVE,  
APPLIANCE, AND MARINE. WIRE HARNESS,  
SPLICE INSULATION, AND SPOT TAPING.

Backing/Adhesive	PE Cloth / Natural Rubber	
Thickness	10.5 mil	0.267 mm
Adhesion to Steel	43 oz/in	4.70 N/cm
Tensile	32 lb/in	56.04 N/cm
Operating Temp	40 - 200 °F	4 - 93 °C
Colors	Black	
Std Sizes	1 in x 60Yd, 48mm x 55M	

**POLYKEN 227**  
11 mil Professional Grade

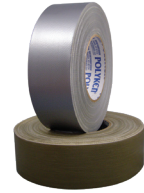


HIGH ADHESION FOR DIFFICULT SURFACES  
CRISP, STRAIGHT TEAR  
RESISTS TWISTING AND CURLING

HEAVY-DUTY SEALING, BUNDLING, AND  
REPAIRS. HANG, SEAM, AND PATCH PE  
SHEETING. MAINTENANCE USES.

Backing/Adhesive	PE Cloth / Natural Rubber	
Thickness	11.0 mil	0.279 mm
Adhesion to Steel	70 oz/in	7.66 N/cm
Tensile	24 lb/in	42.03 N/cm
Operating Temp	40 - 200 °F	4 - 93 °C
Colors	Silver, Black	
Std Sizes	48mm x 55M	

**POLYKEN 222**  
12 mil Premium Grade



HIGH MOISTURE RESISTANCE  
HIGH ADHESION TO ROUGH SURFACES  
GOOD TEAR PROPERTIES

WATER-RESISTANT DUCT TAPE FOR HEAVY-  
DUTY PACKAGING, BUNDLING, SEAMING,  
MAINTENANCE, AND GENERAL REPAIR.

Backing/Adhesive	PE Cloth / Natural Rubber	
Thickness	12.0 mil	0.305 mm
Adhesion to Steel	90 oz/in	9.85 N/cm
Tensile	36 lb/in	63.05 N/cm
Operating Temp	40 - 200 °F	4 - 93 °C
Colors	Silver, Olive Drab	
Std Sizes	48mm, 72mm x 55M	

**POLYKEN 229**  
12 mil Premium Grade



SUPERIOR ADHESION AND TACK  
EXCELLENT SHEAR STRENGTH  
HIGH STRENGTH AND CLEAN, CRISP TEAR

EXCEPTIONAL MOISTURE RESISTANCE AND  
STRENGTH FOR PACKAGING, BUNDLING,  
SEAMING, AND REPAIRS. SEALING DUCTS.

Backing/Adhesive	PE Cloth / Natural Rubber	
Thickness	12.0 mil	0.305 mm
Adhesion to Steel	90 oz/in	9.85 N/cm
Tensile	27 lb/in	47.28 N/cm
Operating Temp	40 - 200 °F	4 - 93 °C
Colors	Silver, Black	
Std Sizes	48mm, 72 mm x 55M	

**POLYKEN 221**  
12 mil Screen Printing

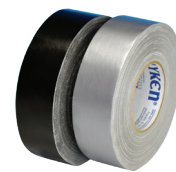


RESISTS SOLVENTS AND MOISTURE  
LOW-RESIDUE REMOVAL FROM FRAMES  
CRISP, STRAIGHT TEAR

MASK AND PROTECT FRAME EDGES FROM  
MOISTURE AND CHEMICALS DURING  
SILK SCREEN OPERATIONS. WATERPROOF  
PACKAGING. BUNDLING AND REPAIRS.

Backing/Adhesive	PE Cloth / Natural Rubber	
Thickness	12.0 mil	0.305 mm
Adhesion to Steel	75 oz/in	8.21 N/cm
Tensile	33 lb/in	57.79 N/cm
Operating Temp	40 - 200 °F	4 - 93 °C
Colors	White	
Std Sizes	48mm, 72mm x 55M	

**POLYKEN 253**  
13 mil Premium Grade



EXCEPTIONAL ADHESION AND SHEAR  
HIGH TENSILE STRENGTH  
CLEAN, CRISP STRAIGHT TEAR

HEAVY-DUTY PACKAGING, SEALING,  
SEAMING, AND REPAIR. HANG, SEAM,  
AND PATCH PE SHEETING. MEDIA BLAST  
PROTECTION. BUNDLING AND WRAPPING.

Backing/Adhesive	PE Cloth / Natural Rubber	
Thickness	13.0 mil	0.330 mm
Adhesion to Steel	95 oz/in	10.39 N/cm
Tensile	50 lb/in	87.56 N/cm
Operating Temp	40 - 200 °F	4 - 93 °C
Colors	Silver, Black	
Std Sizes	48mm, 72mm x 55M	

**Did You Know...?** Not all duct tapes are “created” equal. The adhesive formulation (natural rubber or synthetic rubber), the backing composition (PE blend and cloth type), and the method in which these materials are put together all play a role in influencing product performance. Depending on these factors, a duct tape will be well-suited for some applications but not others.

In fact, adhesives have three key performance characteristics: Peel, Shear, and Tack. An adhesive can be designed to offer high values in one or two of these, but never all three. Call upon the experts at Berry Global to discuss the needs of your demanding application to determine which product will work best for your needs.

**PEEL (Adhesion):**  
The force required to pull a strip of tape from a surface at a specified angle and speed.

**SHEAR (Holding Strength):**  
The bond strength of a tape when a vertical stress is applied.

**TACK (Quick Stick):**  
The ability of an adhesive to form a measurably strong bond immediately after low-pressure surface contact.



# Nashua® Cloth Duct Tapes

For generations of contractors, Nashua Tape Products has been the dependable, trusted choice for duct tapes that get the job done right the first time, every time for over 60 years. Designed to meet the rigors of abatement, remediation and safety, construction, HVAC, and maintenance applications, the power of Nashua tapes is in the unique combination of quality, value, and proven performance. With premium natural rubber adhesive and high-strength PE/cloth backings, the Nashua duct tape assortment includes a product to meet your application needs.

## NASHUA 307 7 mil Utility Grade



**HIGH ADHESION RUBBER ADHESIVE  
CRISP, STRAIGHT TEAR BY HAND  
RESISTS TWISTING AND CURLING**

GENERAL PURPOSE BUNDLING,  
PACKAGING, SEAMING, AND REPAIRS.  
PLUMBING USES.

Backing/Adhesive	PE Cloth / Natural Rubber	
Thickness	7.0 mil	0.178 mm
Adhesion to Steel	65 oz/in	7.11 N/cm
Tensile	21 lb/in	36.78 N/cm
Operating Temp	40 - 200 °F	4 - 93 °C
Colors	Silver, Black	
Std Sizes	48mm, 72mm x 55M	

## NASHUA 308 8 mil Utility Grade



**BONDS TO SMOOTH OR ROUGH SURFACES  
CRISP, STRAIGHT TEAR BY HAND  
RESISTS TWISTING AND CURLING**

GENERAL PURPOSE BUNDLING,  
PACKAGING, SEAMING, AND REPAIRS.  
PLUMBING USES.

Backing/Adhesive	PE Cloth / Natural Rubber	
Thickness	8.0 mil	0.203 mm
Adhesion to Steel	55 oz/in	6.02 N/cm
Tensile	22 lb/in	38.53 N/cm
Operating Temp	40 - 200 °F	4 - 93 °C
Colors	Silver, Black	
Std Sizes	48mm, 72mm x 55M	

## NASHUA 850UV 8.5 mil UV Resistant



**UV RESISTANT (UP TO 14 DAYS)  
GOOD ADHESION AND SHEAR STRENGTH  
WITHSTANDS OUTDOOR CONDITIONS**

MASKING SURFACES AND HANGING PE  
SHEETING IN STUCCO, PLASTERING, AND  
PAINTING APPLICATIONS.

Backing/Adhesive	PE Cloth / Natural Rubber	
Thickness	8.5 mil	0.216 mm
Adhesion to Steel	62 oz/in	6.78 N/cm
Tensile	21 lb/in	36.78 N/cm
Operating Temp	40 - 200 °F	4 - 93 °C
Colors	Red, White	
Std Sizes	48mm, 72mm x 55M	

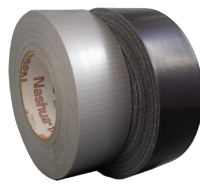
## NASHUA 2280 9 mil Multi-Purpose Grade



**STRONG ADHESION TO ROUGH SURFACES  
EXCELLENT TENSILE STRENGTH AND TEAR  
GOOD SHEAR STRENGTH**

Backing/Adhesive	PE Cloth / Natural Rubber	
Thickness	9.0 mil	0.229 mm
Adhesion to Steel	70 oz/in	7.66 N/cm
Tensile	24 lb/in	42.03 N/cm
Operating Temp	40 - 200 °F	4 - 93 °C
Colors	Black, Blue, Brown, Burgundy, OD Green, Red, Silver, Tan, Yellow, White	
Std Sizes	48mm, 72mm x 55M	

## NASHUA 300 10 mil Multi-Purpose Grade



**GOOD ADHESION AND SHEAR STRENGTH  
EXCELLENT CONFORMABILITY  
BONDS TO ROUGH OR SMOOTH SURFACES**

HANG, SEAM, AND PATCH PE SHEETING  
BUNDLE, PACKAGE, AND SEAL. GENERAL  
REPAIRS. PLUMBING AND MAINTENANCE.

Backing/Adhesive	PE Cloth / Natural Rubber	
Thickness	10.0 mil	0.254 mm
Adhesion to Steel	75 oz/in	8.21 N/cm
Tensile	24 lb/in	42.03 N/cm
Operating Temp	40 - 200 °F	4 - 93 °C
Colors	Silver, Black	
Std Sizes	48mm, 72mm x 55M	

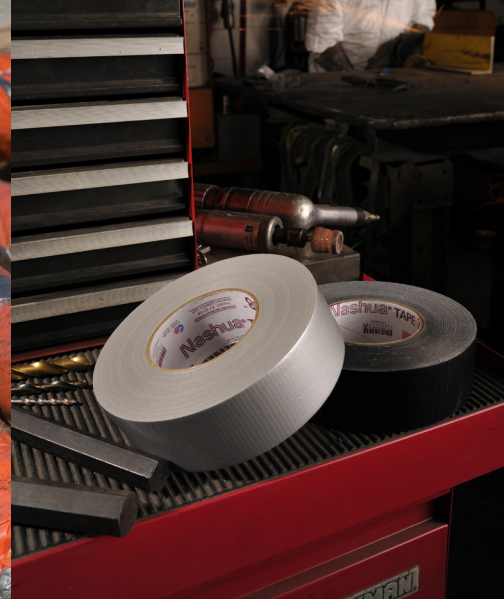
## NASHUA 396 10 mil Multi-Purpose Grade



**GOOD ADHESION AND SHEAR STRENGTH  
EXCELLENT CONFORMABILITY  
BONDS TO ROUGH OR SMOOTH SURFACES**

HANG, SEAM, AND PATCH PE SHEETING.  
BUNDLE, PACKAGE, AND SEAL. GENERAL  
REPAIRS. PLUMBING AND MAINTENANCE.

Backing/Adhesive	PE Cloth / Natural Rubber	
Thickness	10.0 mil	0.254 mm
Adhesion to Steel	75 oz/in	8.21 N/cm
Tensile	24 lb/in	42.03 N/cm
Operating Temp	40 - 200 °F	4 - 93 °C
Colors	Silver	
Std Sizes	48mm, 72mm x 55M	



**NASHUA 398**  
11 mil Professional Grade



**AGGRESSIVE BOND TO SURFACES**  
**EXCELLENT TENSILE STRENGTH AND TEAR**  
**HIGH SHEAR STRENGTH**

HANG, SEAM, AND PATCH PE SHEETING.  
HEAVY-DUTY BUNDLING, PATCHING,  
SEALING, AND REPAIRS. MAINTENANCE  
USES AND COLOR CODING.

Backing/Adhesive	PE Cloth / Natural Rubber	
Thickness	11.0 mil	0.279 mm
Adhesion to Steel	80 oz/in	8.75 N/cm
Tensile	24 lb/in	42.03 N/cm
Operating Temp	40 - 200 °F	4 - 93 °C
Colors	Black, Blue, Brown, Green, OD, Red, Silver, White, Yellow, Prt Silver	
Std Sizes	48mm, 72mm x 55M	

**NASHUA 365**  
11 mil Professional Grade



**EXCELLENT STRENGTH AND TEAR**  
**AGGRESSIVE ADHESION TO SURFACES**  
**RESISTS TWISTING AND CURLING**

DUCT AND JOINT SEALING. PATCHING AND  
SEALING INSULATION MATERIALS. PATCH  
AND REPAIR ON METALLIC FINISHES.

Backing/Adhesive	Metalized PE Cloth / Natural Rubber	
Thickness	11.0 mil	0.279 mm
Adhesion to Steel	70 oz/in	7.66 N/cm
Tensile	23 lb/in	40.28 N/cm
Operating Temp	40 - 200 °F	4 - 93 °C
Colors	Metallic	
Std Sizes	48mm, 72mm x 55M	

**NASHUA 345**  
12 mil Premium Grade

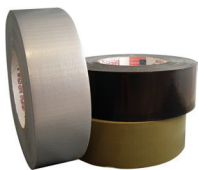


**EXCELLENT TENSILE AND TEAR**  
**HIGH ADHESION AND SHEAR STRENGTH**  
**EXCELLENT MOISTURE RESISTANCE**

PREMIUM MOISTURE-RESISTANT DUCT  
TAPE FOR SEAMING, REPAIRING, AND  
PATCHING. HVAC AND ABATEMENT USES.

Backing/Adhesive	PE Cloth / Natural Rubber	
Thickness	12.0 mil	0.305 mm
Adhesion to Steel	70 oz/in	7.66 N/cm
Tensile	24 lb/in	42.03 N/cm
Operating Temp	40 - 200 °F	4 - 93 °C
Colors	Silver, Black	
Std Sizes	48mm, 72mm x 55M	

**NASHUA 354**  
13 mil Premium Grade



**BONDS TO SMOOTH OR ROUGH SURFACES**  
**CRISP, STRAIGHT TEAR**  
**RESISTS TWISTING AND CURLING**

HVAC AND MAINTENANCES USES. HEAVY-  
DUTY SEALING, PATCHING, AND REPAIRS.  
MEDIA BLAST PROTECTION.

Backing/Adhesive	PE Cloth / Natural Rubber	
Thickness	13.0 mil	0.330 mm
Adhesion to Steel	50 oz/in	5.47 N/cm
Tensile	29 lb/in	50.79 N/cm
Operating Temp	40 - 200 °F	4 - 93 °C
Colors	Silver, Black, Olive Drab	
Std Sizes	48mm x 55M	

**NASHUA 357**  
13 mil Premium Grade



**EXCELLENT ADHESION AND SHEAR**  
**PUNCTURE AND ABRASION RESISTANT**  
**EXCELLENT MOISTURE RESISTANCE**

HEAVY-DUTY PACKAGING, SEALING,  
SEAMING, AND REPAIR. HANG, SEAM,  
AND PATCH PE SHEETING. MEDIA BLAST  
PROTECTION. BUNDLING AND WRAPPING.

Backing/Adhesive	PE Cloth / Natural Rubber	
Thickness	13.0 mil	0.330 mm
Adhesion to Steel	95 oz/in	10.39 N/cm
Tensile	50 lb/in	87.56 N/cm
Operating Temp	40 - 200 °F	4 - 93 °C
Colors	Silver, Black, Olive Drab, Red, White, Printed Silver	
Std Sizes	48mm, 72mm x 55M	

**NASHUA 349**  
16 mil Super Premium Grade



**SUPER THICK BACKING AND ADHESIVE**  
**HIGH ADHESION AND SHEAR STRENGTH**  
**TOUGH, DURABLE, MOISTURE RESISTANT**

HEAVY-DUTY MAINTENANCE, REPAIR,  
BUNDLING, AND SEALING. BOTTOM  
BOARD SEALING FOR MANUFACTURED  
AND MOBILE HOUSING.

Backing/Adhesive	PE Cloth / Natural Rubber	
Thickness	16.0 mil	0.406 mm
Adhesion to Steel	55 oz/in	6.02 N/cm
Tensile	48 lb/in	84.06 N/cm
Operating Temp	40 - 200 °F	4 - 93 °C
Colors	Black	
Std Sizes	48mm x 36M	



# Nuclear/Military/FR Tapes

The Polyken and Nashua duct tape assortments include products that are designed with critical performance features and undergo specialized testing making them suitable for demanding applications in military packaging and waterproofing, nuclear environments, screen printing, the marine and oil industry, and more. These products can be supplied with certificates of compliance to verify and ensure they meet all necessary standards.



## POLYKEN 226

12 mil Premium Nuclear Grade



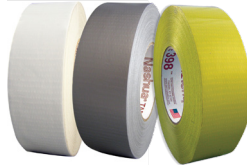
**EXCELLENT TACK AND ADHESION  
GOOD STRENGTH AND TEAR  
MEETS NRC AND ASME STANDARDS**

USED IN NUCLEAR ENVIRONMENTS TO SECURE DOSIMETERS AND CLOTHING. COLOR CODING, SEALING PIPE ENDS, DUCTS, AND MORE.

Backing/Adhesive	PE Cloth / Natural Rubber	
Thickness	12.0 mil	0.305 mm
Adhesion to Steel	50 oz/in	5.47 N/cm
Tensile	30 lb/in	52.54 N/cm
Operating Temp	40 - 200 °F	4 - 93 °C
Colors	Silver, Red, Black, White	
Std Sizes	48mm x 55M	

## NASHUA 398N

11 mil Nuclear Grade



**EXCELLENT TENSILE AND TEAR  
AGGRESSIVE BOND TO SURFACES  
MEETS NRC AND ASME STANDARDS**

USED IN NUCLEAR ENVIRONMENTS TO SECURE DOSIMETERS AND CLOTHING. COLOR CODING, SEALING PIPE ENDS, DUCTS, AND MORE.

Backing/Adhesive	PE Cloth / Natural Rubber	
Thickness	11.0 mil	0.279 mm
Adhesion to Steel	80 oz/in	8.75 N/cm
Tensile	24 lb/in	42.03 N/cm
Operating Temp	40 - 200 °F	4 - 93 °C
Colors	Silver, White, Yellow	
Std Sizes	48mm x 55M	

## NASHUA 357N

13 mil Nuclear Grade



**EXCELLENT ADHESION AND TENSILE  
PUNCTURE AND ABRASION RESISTANT  
MEETS NRC AND ASME STANDARDS**

HEAVY-DUTY USES IN NUCLEAR ENVIRONMENTS TO SECURE PROTECTIVE CLOTHING. COLOR CODING, SEALING PIPE ENDS, BUNDLING, AND MORE.

Backing/Adhesive	PE Cloth / Natural Rubber	
Thickness	13.0 mil	0.330 mm
Adhesion to Steel	95 oz/in	10.39 N/cm
Tensile	50 lb/in	87.56 N/cm
Operating Temp	40 - 200 °F	4 - 93 °C
Colors	Silver, Red	
Std Sizes	48mm, 72mm x 55M	

## POLYKEN 231

12 mil Premium Military Grade



**DURABLE, WATERPROOF BACKING  
EXTREME HIGH ADHESION  
HIGH STRENGTH AND STRAIGHT TEAR  
MEETS ASTM D-5486 TYPE IV, CLASS 1**

PACKAGING, SEALING, AND WATERPROOFING FOR MILITARY AND AEROSPACE USES. MEDIA BLAST PROTECTION AND SURFACE MASKING.

Backing/Adhesive	PE Cloth / Natural Rubber	
Thickness	12.0 mil	0.305 mm
Adhesion to Steel	95 oz/in	10.39 N/cm
Tensile	50 lb/in	87.56 N/cm
Operating Temp	40 - 200 °F	4 - 93 °C
Colors	Olive Drab, Black	
Std Sizes	48mm, 72mm x 55M	

## POLYKEN 273

12 mil Lusterless Military Grade



**LUSTERLESS, NON-REFLECTIVE BACKING  
EXTREME HIGH TENSILE STRENGTH  
WATER, SOLVENT, ABRASION RESISTANT  
MEETS ASTM D-5486 TYPE IV CLASS 1**

WATERPROOF PACKAGING FOR MILITARY AND AEROSPACE APPLICATIONS. MEDIA BLAST PROTECTION. CHALLENGING REPAIR, BUNDLING, AND SEAMING.

Backing/Adhesive	Lusterless PE Cloth / Natural Rubber	
Thickness	12.0 mil	0.305 mm
Adhesion to Steel	60 oz/in	6.56 N/cm
Tensile	55 lb/in	96.32 N/cm
Operating Temp	40 - 200 °F	4 - 93 °C
Colors	Olive Drab, Black, Green, Red, White	
Std Sizes	Call for details	

## POLYKEN 235FR

12 mil Flame Retardant



**FLAME RETARDANT  
HIGH TENSILE STRENGTH  
RESISTS MOISTURE AND SOLVENTS**

HANG, SEAM, AND PATCH PE SHEETING. BUNDLE, SEAL, AND REPAIR. APPLICATIONS WHERE FLAME RETARDANCE IS REQUIRED.

Backing/Adhesive	PE Cloth / Natural Rubber	
Thickness	12.0 mil	0.305 mm
Adhesion to Steel	40 oz/in	4.38 N/cm
Tensile	29 lb/in	50.79 N/cm
Operating Temp	40 - 200 °F	4 - 93 °C
Colors	Silver	
Std Sizes	48mm, 72mm x 55M	

# Gaffer's Tapes

Trusted by professionals in the arts & entertainment, convention, and hospitality industries for more than 50 years, Polyken Gaffer's and AV tapes are designed to provide strong adhesion, exceptional clean removal, and a low-gloss, matte finish. With a full assortment of high performance tapes, you can count on finding the right Polyken tape, in the right color, at the right price for your application.



## POLYKEN 510

11.5 mil Premium Gaffer



**DURABLE, MATTE-FINISH BACKING**  
**HIGH ADHESION, HIGH SHEAR ADHESIVE**  
**CLEAN REMOVAL FROM MOST SURFACES**  
 INDOOR/OUTDOOR WIRE HOLD DOWN  
 FOR ENTERTAINMENT, PHOTOGRAPHY,  
 CONVENTION, HOSPITALITY, AND MORE.  
 COLOR CODING. MARKING STAGE  
 LOCATIONS AND HAZARDS.

Backing/Adhesive	Coated Cloth / Natural Rubber	
Thickness	11.5 mil	0.292 mm
Adhesion to Steel	50 oz/in	5.47 N/cm
Tensile	42 lb/in	73.55 N/cm
Operating Temp	40 - 200 °F	4 - 93 °C
Colors	Black, White, Gray, Beige, Burgundy, Navy Blue, Red, Green, Yellow, Brown, Teal, Royal Blue, Purple, Neon (Yellow, Pink, Orange, Green)	
Std Sizes	1 in, 4 in x 55Yd 48mm, 72 mm x 50M	

## POLYKEN 512

12 mil Multi-Purpose Gaffer



**STRONG, MATTE-FINISH BACKING**  
**HIGH TACK CLEAR ADHESIVE**  
**CLEAN REMOVAL FROM MOST SURFACES**  
 INDOOR/OUTDOOR WIRE HOLD DOWN  
 FOR ENTERTAINMENT, PHOTOGRAPHY,  
 AND MORE. COLOR CODING. MARKING  
 STAGE LOCATIONS AND HAZARDS.

Backing/Adhesive	Coated Cloth / Synthetic Rubber	
Thickness	12.0 mil	0.305 mm
Adhesion to Steel	66 oz/in	7.22 N/cm
Tensile	40 lb/in	70.05 N/cm
Operating Temp	40 - 200 °F	4 - 93 °C
Colors	Black, White, Gray, Beige, Red, Brown, Navy Blue, Yellow	
Std Sizes	48 mm, 72 mm x 50M	

## POLYKEN 500

10.5 mil Low-Gloss Duct/AV Cord



**MATTE-FINISH FOR LESS REFLECTIVITY**  
**STRONG AND ABRASION RESISTANT**  
**CLEAN REMOVAL - INDOOR OR OUTDOOR**  
**REMOVES CLEAN FROM MOST SURFACES**

AV CORD TAPE PROTECTS AND  
 ANCHORS WIRES FOR PHOTOGRAPHY,  
 ENTERTAINMENT, HOSPITALITY,  
 CONVENTIONS, AND MORE. BOOKBINDING  
 AND SEAM REINFORCEMENT.

Backing/Adhesive	PE Cloth / Natural Rubber	
Thickness	10.5 mil	0.267 mm
Adhesion to Steel	66 oz/in	7.22 N/cm
Tensile	50 lb/in	87.56 N/cm
Operating Temp	40 - 200 °F	4 - 93 °C
Colors	Black	
Std Sizes	48 mm, 72 mm x 41.1 M	

## Adhesive Tapes for Converters

For customers that provide custom slitting, laminating, and converting services for manufacturers and end-users, Berry offers a broad selection of pressure-sensitive adhesive tapes in master roll and log formats.

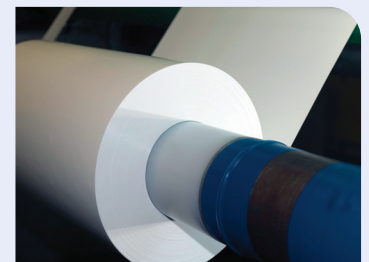
Contact your area sales manager today to learn about our offering of converter products including:

**POLYKEN**® Cloth Duct Tapes  
 Gaffer's Tapes  
 Double-Coated Cloth Tapes

**PATCO**® Polyethylene, Polyurethane,  
 PVC, and PET Film Tapes

**ADCHEM** Transfer Tapes  
 The adhesive tape engineers® Double-Coated Film Tapes

**Nashua**® Cloth Duct Tapes  
 TAPE PRODUCTS  
 PROFESSIONALS' CHOICE



# Double-Coated Cloth Tapes

With the strength and tearability of duct tape, Polyken and Nashua double-coated cloth tapes are designed for a variety of applications including carpet hold down, mounting, and laminating. With both standard and differential adhesive systems that allow for clean removal from various construction surfaces, Berry's assortment of double-coated cloth tapes includes the right product for your application to get the job done right the first time.



## POLYKEN 105C

11 mil Multi-Purpose DC Cloth



BONDS TO SMOOTH OR ROUGH SURFACES  
CLEAN REMOVAL FROM MANY SURFACES  
EASY TO USE RELEASE LINER

TEMPORARY CARPET INSTALLATION  
FOR CONVENTION AND HOSPITALITY  
INDUSTRY. HANG AND SEAM PE  
SHEETING. MOUNTING USES.

Adhesive/Liner	Natural Rubber / LDPE or Paper	
Thickness	11.0 mil	0.279 mm
Adhesion to Steel	40 oz/in	4.38 N/cm
Tensile	20 lb/in	35.03 N/cm
Operating Temp	40 - 200 °F	4 - 93 °C
Colors	Natural	
Std Sizes	48mm, 72mm x 23M or 33M	

## POLYKEN 100D

13 mil Premium DC Cloth



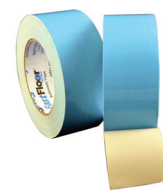
EXCELLENT BOND TO ROUGH MATERIALS  
CLEAN REMOVAL FROM MANY SURFACES  
EASY TO USE RELEASE LINER

TEMPORARY CARPET INSTALLATION  
FOR CONVENTION AND HOSPITALITY  
INDUSTRY. HANG AND SEAM PE  
SHEETING. MOUNTING USES.

Adhesive/Liner	Natural Rubber / LDPE or Paper	
Thickness	13.0 mil	0.330 mm
Adhesion to Steel	45 oz/in	4.92 N/cm
Tensile	30 lb/in	54.54 N/cm
Operating Temp	40 - 200 °F	4 - 93 °C
Colors	Natural	
Std Sizes	48mm, 72mm x 23M or 33M	

## POLYKEN FASTFLOOR®

Ballroom Carpet



HIGH ADHESION LINER-SIDE ADHESIVE  
CLEAN REMOVAL AIR-SIDE ADHESIVE  
DURABLE BOND WITHOUT MESSY RESIDUE

TEMPORARY CARPET INSTALLATION IN  
CARPETED SPACES FOR CONVENTION AND  
HOSPITALITY. MOUNTING WHERE CLEAN  
REMOVAL IS REQUIRED.

Adhesive/Liner	Natural Rubber / LDPE	
Thickness	11.0 mil	0.279 mm
Adh to Steel (Air)	40 oz/in	4.38 N/cm
Adh to Steel (Lnr)	60 oz/in	6.56 N/cm
Tensile	20 lb/in	35.03 N/cm
Operating Temp	35 - 150 °F	2 - 65 °C
Colors	Natural	
Std Sizes	48mm x 23M	

## NASHUA CLEANDRAPE®

Heavy-Duty Poly Hanging Tape



UP TO 14-DAY CLEAN REMOVAL\*  
DUCT TAPE STRENGTH AND DURABILITY  
EXCELLENT SHEAR STRENGTH

ONE-STEP HANGING TAPE FOR PE  
SHEETING AND TARPS TO CREATE  
CONTAINMENT AREAS FOR CLEANING,  
ABATEMENT, AND CONSTRUCTION.

Adhesive/Liner	Natural Rubber / LDPE	
Thickness	15.0 mil	0.381 mm
Adh to Steel (Air)	25 oz/in	2.74 N/cm
Adh to Steel (Lnr)	40 oz/in	4.38 N/cm
Tensile	63 lb/in	110.33 N/cm
Colors	(AS) Blue / (LS) Natural	
Std Sizes	2 in x 20Yd	

## NASHUA CLEANDRAPE® Shear

Poly Hanging Tape



CLEAN REMOVAL FROM MOST SURFACES  
EXCEPTIONAL SHEAR STRENGTH  
DIFFERENTIAL BOND

ONE-STEP HANGING TAPE FOR PE  
SHEETING AND TARPS TO CREATE  
CONTAINMENT AREAS FOR CLEANING,  
ABATEMENT, AND CONSTRUCTION.

Adhesive/Liner	Synthetic Rubber / PP Film	
Thickness	6.0 mil	0.152 mm
Adh to Steel (Air)	35 oz/in	3.83 N/cm
Adh to Steel (Lnr)	55 oz/in	6.02 N/cm
Tensile	19 lb/in	33.27 N/cm
Colors	Clear	
Std Sizes	48mm, 72mm x 18.3M	

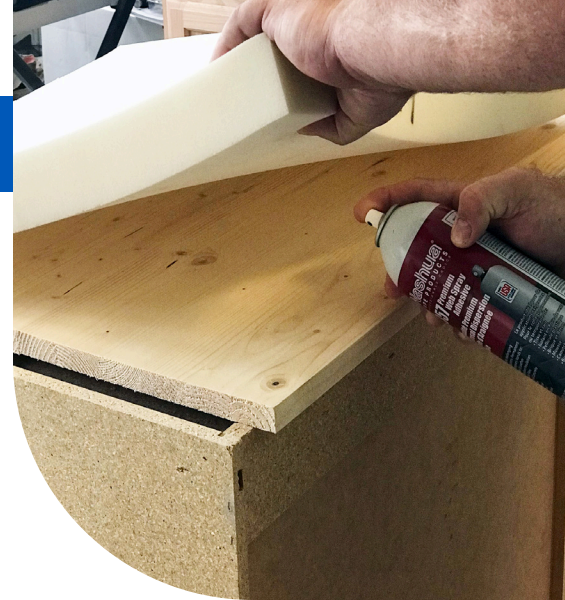
Look for more double-coated  
tapes on pages 17, 27, 28.

\*From Most Surfaces.



# Spray Adhesives

Leveraging Berry's expertise in natural rubber adhesive formulation, Nashua and Polyken offer premium and multi-purpose web/lace spray adhesives used in abatement and remediation, manufacturing and fabrication, insulation, mounting, bonding, and laminating applications across a variety of industries. With exceptional strength and holding power, these products offer both permanent and temporary bonding capability to suit your application.



## POLYKEN 44SA

Premium Web Spray Adhesive



LOW VOC - MEETS SCAQMD STANDARDS  
RESISTS UV, MOISTURE, AND OXIDATION  
EXCELLENT SHEAR STRENGTH

HEAVY-DUTY PERMANENT OR TEMPORARY BONDS FOR FOILS, METALS, FABRICS, LEATHER, RUBBER, WOOD, AND PLASTICS. SECURE INSULATION MATERIALS. PRIME SURFACES.

Base Adhesive	Rubber	
Colors	Water White	
VOC Content	< 40% by Weight	
% Solids	24% Premium Resins	
Operating Temp	-10 - 180 °F	-23 - 88 °C
Std Sizes	20 FL OZ (14 oz Net Wt)	

## NASHUA 398SA

Multi-Purpose Web Spray Adhesive



LOW VOC - MEETS SCAQMD STANDARDS  
PERMANENT OR TEMPORARY BONDS  
GOOD SHEAR STRENGTH

GENERAL PURPOSE BONDING FOR FOILS, FABRICS, LEATHER, RUBBER, WOOD, AND PLASTICS. SECURE INSULATION MATERIALS. PRIME SURFACES.

Base Adhesive	Rubber	
Colors	Water White	
VOC Content	< 40% by Weight	
% Solids	23% Resins	
Operating Temp	-10 - 110 °F	-23 - 43 °C
Std Sizes	17 FL OZ (12 oz Net Wt)	

## NASHUA 357SA

Premium Web Spray Adhesive



LOW VOC - MEETS SCAQMD STANDARDS  
RESISTS UV, MOISTURE, AND OXIDATION  
EXCELLENT SHEAR STRENGTH

HEAVY-DUTY PERMANENT OR TEMPORARY BONDS FOR FOILS, METALS, FABRICS, LEATHER, RUBBER, WOOD, AND PLASTICS. SECURE INSULATION MATERIALS. PRIME SURFACES.

Base Adhesive	Rubber	
Colors	Water White	
VOC Content	< 40% by Weight	
% Solids	24% Premium Resins	
Operating Temp	-10 - 180 °F	-23 - 88 °C
Std Sizes	20 FL OZ (14 oz Net Wt)	

## POLYKEN 1027

Premium Butyl Brush-on Primer



EASY TO APPLY - BRUSH ON  
PROVIDES INSTANT-TACK SURFACE  
MEETS LOCAL AND NATIONAL STANDARDS

PRIMER FOR PIPE SURFACES IN CORROSION PROTECTION USES. PRIME SURFACES PRIOR TO TAPE INSTALLATION ON OSB, BRICK, GYPSUM BOARD, OR CONCRETE.

Base Adhesive	Butyl Rubber / Resins	
Colors	Black	
VOC Content	0.59 kg/L	
% Solids	30% Premium Resins	
Operating Temp	20 - 200 °F	-7 - 93 °C
Std Sizes	1 quart (0.95 L), 1 gallon (3.79 L)	

# Film Tapes

Polyken and Patco® Tapes are among the pioneers in the polyethylene, polyurethane, and polyester film tape markets. With expertise in adhesive formulation, coating, and calendaring, we offer a breadth of tapes suited for both temporary and permanent uses, clean removal, UV exposure, extreme temperatures, abrasion, solvent, and moisture resistance, and more. Our complete line includes products designed to meet the needs of multiple industries including Abatement and Remediation, Construction, Concrete and Stucco, Splicing, Surface Protection, Vapor Barrier, Shrink Wrap, Screen Printing, and more.

## Multi-Purpose Film Tapes

### POLYKEN 757

7 mil Multi-Purpose PE Film



EXCELLENT TACK AND SHEAR STRENGTH  
REPOSITIONABLE AND CLEAN REMOVAL\*  
DURABLE AND SOLVENT RESISTANT

HANG AND PATCH PE SHEETING. SEALS SHRINK WRAP FOR EQUIPMENT STORAGE. SHORT-TERM MASKING. SURFACE PROTECTION. BUNDLE, SEAM, SEAL, AND PATCH. COLOR CODING.

Backing/Adhesive	PE Film / Synthetic Rubber	
Thickness	7.0 mil	0.178 mm
Adhesion to Steel	75 oz/in	8.21 N/cm
Tensile	25 lb/in	43.78 N/cm
Operating Temp	20 - 200 °F	-7 - 93 °C
Colors	Black, Blue, Clear, Green, Orange, Pink, Red, Silver, Teal, White	
Std Sizes	48mm, 72mm, 96mm x 55M	

### POLYKEN 759

9 mil Heavy-Duty PE Film



THICK BACKING FOR ADDED DURABILITY  
HIGH TACK, GOOD QUICK STICK  
SUPERIOR BOND TO ROUGH SURFACES

HANG AND SEAM PE SHEETING TO BUILD TEMPORARY ENCLOSURES OR CONTAINMENT AREAS. SEALS SHRINK WRAP FOR EQUIPMENT STORAGE. SEALING HEAVY-DUTY BUNDLING, SPLICING, AND REPAIRS.

Backing/Adhesive	PE Film / Synthetic Rubber	
Thickness	9.0 mil	0.229 mm
Adhesion to Steel	85 oz/in	9.30 N/cm
Tensile	30 lb/in	52.54 N/cm
Operating Temp	20 - 200 °F	-7 - 93 °C
Colors	Red, White, Clear	
Std Sizes	48mm, 96mm x 55M	

### POLYKEN 824 Red Baron

7 mil Multi-Purpose PE Film



PREMIUM NATURAL RUBBER ADHESIVE  
REPOSITIONABLE AND CLEAN REMOVAL\*  
CONFORMABLE AND FLEXIBLE

STUCCO AND PLASTER MASKING. GENERAL PURPOSE OUTDOOR MASKING. HANG AND SEAM SHEETING MATERIALS. BUNDLING, WRAPPING, AND REPAIRS.

Backing/Adhesive	PE Film / Natural Rubber	
Thickness	7.0 mil	0.178 mm
Adhesion to Steel	45 oz/in	4.92 N/cm
Tensile	20 lb/in	35.03 N/cm
Operating Temp	40 - 200 °F	4 - 93 °C
Colors	Red, White	
Std Sizes	48mm, 72mm x 55M	

### POLYKEN 827

8 mil Premium PE Film



HIGH TACK FOR A SECURE BOND  
REPOSITIONABLE AND CLEAN REMOVAL\*  
CONFORMABLE AND FLEXIBLE

STUCCO AND PLASTER MASKING. OUTDOOR MASKING. SURFACE PROTECTION. VAPOR BARRIER SEALING.

Backing/Adhesive	PE Film / Natural Rubber	
Thickness	8.0 mil	0.203 mm
Adhesion to Steel	60 oz/in	6.56 N/cm
Tensile	21 lb/in	36.78 N/cm
Operating Temp	40 - 200 °F	4 - 93 °C
Colors	Clear, Black, Red, White	
Std Sizes	48mm x 33M, 48mm x 55M	

### PATCO 502R/503R

5.5 mil General Purpose PE Film



BONDS WELL TO A VARIETY OF SURFACES  
SOLVENT AND MOISTURE RESISTANT  
EXCELLENT CONFORMABILITY

FLOOR/AISLE MARKING. SEALING, SPLICING, AND SEAMING. BOND-BREAKER AND FABRICATION USES. COLOR CODING AND TEMPORARY MARKING.

Backing/Adhesive	PE Film / Rubber	
Thickness	5.5 mil	0.140 mm
Adhesion to Steel	25 oz/in	2.74 N/cm
Tensile	11 lb/in	19.26 N/cm
Operating Temp	-40 - 190 °F	-40 - 88 °C
Colors	Clear (502R); Wht, Blk, Red, Blu, Yel, Org, Grn (503R)	
Std Sizes	1in, 2in, 3in x 108Ft	

### PATCO 152

PVC Aisle Marking/Color Coding



CONFORMABLE AND DURABLE BACKING  
EXCELLENT ADHESION TO SURFACES  
ABRASION RESISTANT

COLOR CODING AND STRIPING. AISLE AND FLOOR MARKING. IDENTIFYING HAZARDOUS AREAS.

Backing/Adhesive	PVC / Rubber	
Thickness	6.0 mil	0.152 mm
Adhesion to Steel	18 oz/in	1.97 N/cm
Tensile	18 lb/in	31.52 N/cm
Operating Temp	-20 - 176 °F	-29 - 80 °C
Colors	Blk, Blu, Brn, Grn, Org, Red, Wht, Yel	
Std Sizes	1in, 2in, 3in, 4in x 108Ft	

\*From Most Surfaces.



## UV and FR PE Film Tapes

### POLYKEN 767UV

7 mil Multi-Purpose UV PE Film



CLEAN REMOVAL FOR UP TO 28 DAYS\*  
DURABLE AND SOLVENT RESISTANT  
EXCELLENT SHEAR STRENGTH

OUTDOOR MASKING FOR STUCCO AND PAINT APPLICATION. SEAMING PE SHEETING. SEALS SHRINK WRAP FOR EQUIPMENT STORAGE. AGRICULTURAL USES. WINDOW/DOOR FRAME AND OTHER OUTDOOR SURFACE PROTECTION.

Backing/Adhesive	PE Film / Synthetic Rubber	
Thickness	7.0 mil	0.178 mm
Adhesion to Steel	75 oz/in	8.21 N/cm
Tensile	25 lb/in	43.78 N/cm
Operating Temp	20 - 200 °F	-7 - 93 °C
Colors	Red, White	
Std Sizes	48mm, 96mm x 55M	

### POLYKEN 769UV

9 mil Heavy-Duty UV PE Film



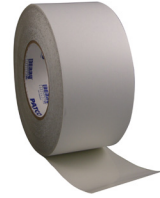
CLEAN REMOVAL UP TO 28 DAYS\*  
THICK, DURABLE, AND SOLVENT RESISTANT  
EXCELLENT SHEAR STRENGTH

OUTDOOR MASKING FOR STUCCO AND PAINT. SEAMING HEAVY-DUTY PE SHEETING. SEALS SHRINK WRAP FOR EQUIPMENT STORAGE. AGRICULTURAL USES. WINDOW/DOOR FRAME AND OTHER OUTDOOR SURFACE PROTECTION.

Backing/Adhesive	PE Film / Synthetic Rubber	
Thickness	9.0 mil	0.229 mm
Adhesion to Steel	85 oz/in	9.30 N/cm
Tensile	32 lb/in	56.04 N/cm
Operating Temp	20 - 200 °F	-7 - 93 °C
Colors	Red, White	
Std Sizes	48mm, 72mm, 96mm x 55M	

### PATCO 5067-53

UV Resistant Greenhouse Tape



UV AND WEATHER RESISTANT  
MOISTURE AND SOLVENT RESISTANT  
EXCELLENT LONG-TERM ADHESION

GREENHOUSE PATCH AND REPAIR. GENERAL PURPOSE SPLICING, SEALING, AND SEAMING. SURFACE PROTECTION AND TEMPORARY HOLD-DOWN.

Backing/Adhesive	PE Film / Acrylic / Kraft	
Thickness	6.0 mil	0.152 mm
Adhesion to Steel	40 oz/in	4.38 N/cm
Tensile	11 lb/in	19.25 N/cm
Operating Temp	-40 - 190 °F	-40 - 88 °C
Colors	Clear	
Std Sizes	2 in, 4 in, 6 in x 48 Ft	

### PATCO 5400

9 mil UV Preservation & Sealing



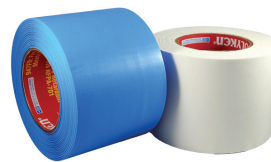
UV AND WEATHER RESISTANT  
MOISTURE AND SOLVENT RESISTANT  
EXCELLENT TACK AND ADHESION

LONG-TERM PRESERVATION, SEALING, AND SPLICING. DIRECT PROTECTIVE MASK ON VEHICLES AND EQUIPMENT. SPLICE AND SEAL OUTDOOR SHRINK FILM.

Backing/Adhesive	PE Film / Rubber	
Thickness	9.0 mil	0.229 mm
Adhesion to Steel	25 oz/in	2.74 N/cm
Tensile	17 lb/in	29.77 N/cm
Operating Temp	-40 - 200 °F	-40 - 93 °C
Colors	White	
Std Sizes	2 in, 3 in, 4 in x 108 Ft	

### POLYKEN 947FR

7 mil Multi-Purpose FR PE Film



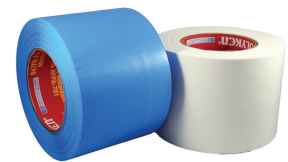
FLAME RETARDANT MEETS NFPA-701  
THICK, DURABLE, AND SOLVENT RESISTANT  
EXCELLENT SHEAR STRENGTH

SEALING PE SHEETING FOR TEMPORARY ENCLOSURES AND SCAFFOLD SURROUNDS. SEAMING FR CORREX® SURFACE PROTECTION BOARD.

Backing/Adhesive	PE Film / Synthetic Rubber	
Thickness	7.2 mil	0.183 mm
Adhesion to Steel	75 oz/in	8.21 N/cm
Tensile	25 lb/in	43.78 N/cm
Operating Temp	20 - 200 °F	-7 - 93 °C
Colors	Red, White, Cool Blue	
Std Sizes	48mm, 96mm x 55M	

### POLYKEN 949FR

9 mil Heavy-Duty FR PE Film



FLAME RETARDANT MEETS NFPA-701  
THICK, DURABLE, AND SOLVENT RESISTANT  
EXCELLENT SHEAR STRENGTH

SEALING PE SHEETING FOR TEMPORARY ENCLOSURES AND SCAFFOLD SURROUNDS. SEAMING FR CORREX® SURFACE PROTECTION BOARD.

Backing/Adhesive	PE Film / Synthetic Rubber	
Thickness	9.0 mil	0.229 mm
Adhesion to Steel	85 oz/in	9.30 N/cm
Tensile	30 lb/in	52.54 N/cm
Operating Temp	20 - 200 °F	-7 - 93 °C
Colors	Red, White, Cool Blue	
Std Sizes	48mm, 96mm x 55M	



# Vapor Barrier/ Permanent Tapes



## POLYKEN 857 7 mil Vapor Barrier Tape

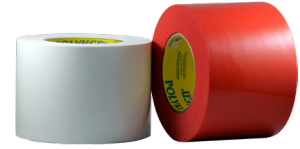


**PERMANENT BOND**  
DURABLE AND SOLVENT RESISTANT  
EXCELLENT SHEAR STRENGTH

SEAMING VAPOR BARRIER FILMS AND UNDERLAYMENT. SPLICING AND SEAMING HEAVY-WEIGHT MATERIALS.

Backing/Adhesive	PE Film / Synthetic Rubber	
Thickness	7.0 mil	0.178 mm
Adhesion to Steel	125 oz/in	13.68 N/cm
Tensile	25 lb/in	43.78 N/cm
Permeance	0.11 US Perms	
Operating Temp	20 - 200 °F	-7 - 93 °C
Colors	Red, White	
Std Sizes	48 mm, 72 mm, 96 mm x 55 M	

## POLYKEN 859 9 mil Vapor Barrier Tape



**PERMANENT BOND**  
THICK, DURABLE AND SOLVENT RESISTANT  
EXCELLENT SHEAR STRENGTH

SEAMING HEAVY-DUTY VAPOR BARRIER FILMS AND UNDERLAYMENT. SPLICING AND SEAMING HEAVY-WEIGHT MATERIALS.

Backing/Adhesive	PE Film / Synthetic Rubber	
Thickness	9.0 mil	0.229 mm
Adhesion to Steel	134 oz/in	14.66 N/cm
Tensile	33 lb/in	57.79 N/cm
Permeance	0.09 US Perms	
Operating Temp	20 - 200 °F	-7 - 93 °C
Colors	Red, White	
Std Sizes	48 mm, 72 mm, 96 mm x 55 M	

## POLYKEN 853 Premium Vapor Barrier Tape



**EXCEPTIONAL VAPOR BARRIER**  
**PERMANENT BOND TO PE FILM**  
THICK, DURABLE AND SOLVENT RESISTANT  
EXCELLENT SHEAR STRENGTH

SEAMING VAPOR BARRIER FILMS AND UNDERLAYMENT. CONCRETE UNDERLAYMENT APPLICATIONS. SPLICING AND SEAMING HEAVY-WEIGHT MATERIALS.

Backing/Adhesive	PE Film / Acrylic	
Thickness	6.0 mil	0.152 mm
Adhesion to Steel	120 oz/in	13.13 N/cm
Tensile	22.5 lb/in	39.40 N/cm
Permeance	0.03 US Perms	
Operating Temp	-22 - 212 °F	-30 - 100 °C
Colors	Red	
Std Sizes	96 mm x 55 M	

## POLYKEN 820 MEGAGRIP® Permanent Waterproof Tape



**PERMANENT, WATER-TIGHT BOND**  
ADHERES IN WET OR DRY CONDITIONS  
CONFORMABLE, FLEXIBLE, AND DURABLE  
ALL-TEMPERATURE PERFORMANCE

SECURE/SEAL VAPOR BARRIER MATERIALS FOR CONCRETE WALLS AND FLOORS. SEALING HEAVY-DUTY FLOOR PROTECTION. WATERPROOF SEALING.

Backing/Adhesive	PE Film / Rubber / Kraft Liner	
Thickness	20.0 mil	0.508 mm
Adhesion to Steel	115 oz/in	12.58 N/cm
Tensile	10 lb/in	17.51 N/cm
Permeance	0.10 US Perms	
Operating Temp	-30 - 165 °F	-34 - 74 °C
Colors	Black, White	
Std Sizes	3in, 4in x 100Ft	

## PATCO 502A/503A 5.5 mil Acrylic PE Film



**SUPERIOR HIGH/LOW TEMP PERFORMANCE**  
HIGH ADHESION - LONG-TERM BONDING  
MOISTURE AND SOLVENT RESISTANT  
ABRASION RESISTANT

GENERAL PURPOSE SEALING, SPLICING, AND SEAMING. INDOOR SURFACE PROTECTION. BOND-BREAKER TAPE USES. COLOR CODING AND TEMPORARY MARKING.

Backing/Adhesive	PE Film / Acrylic	
Thickness	5.5 mil	0.140 mm
Adhesion to Steel	50 oz/in	5.47 N/cm
Tensile	11 lb/in	19.26 N/cm
Operating Temp	-40 - 190 °F	-40 - 88 °C
Colors	Clear (502A) Wht, Blk, Red, Blu, Yel, Org, Grn (503A)	
Std Sizes	1 in, 2 in, 3 in x 108 Ft	

# Long-Term/Outdoor Surface Protection Tapes



## PATCO 5005 5.5 mil UV Resistant MDPE Film



UV RESISTANT AND NON-YELLOWING  
TOUGH AND ABRASION RESISTANT  
CLEAN REMOVAL FROM MOST SURFACES  
INDOOR/OUTDOOR SURFACE PROTECTION  
FROM MOISTURE, UV, AND ABRASION.  
PATCHING, SEAMING, OVER-LAMINATING.

Backing/Adhesive	MDPE Film / Acrylic	
Thickness	5.5 mil	0.140 mm
Adhesion to Steel	32 oz/in	3.50 N/cm
Tensile	11 lb/in	19.26 N/cm
Operating Temp	-40 - 200 °F	-40 - 93 °C
Colors	Clear	
Std Sizes	1 in, 2 in, 3 in x 108 Ft	

## PATCO 8210 Heavy-Duty Outdoor PU Film



NON-YELLOWING, LONG-TERM BONDING  
WILL NOT DRY OUT, LIFT, OR STAIN  
CONFORMABLE, PRINTABLE, PAINTABLE  
KRAFT RELEASE LINER - DIE-CUTTABLE  
LONG-TERM INDOOR/OUTDOOR SURFACE  
PROTECTION ON NORMAL TO HIGH-WEAR  
SURFACES. LEADING EDGE PROTECTION.

Backing/Adhesive	PU Film / Acrylic / Kraft Liner	
Thickness	14.5 mil	0.368 mm
Adhesion to Steel	110 oz/in	12.03 N/cm
Tensile	80 lb/in	140.10 N/cm
Operating Temp	-40 - 275 °F	-40 - 135 °C
Colors	Transparent	
Std Sizes	1 in, 2 in, 3 in, 4 in x 108 Ft	

# Short-Term/Indoor Surface Protection Tapes

## PATCO 560 5.5 mil Removable PE Film



THICK, DURABLE, AND CONFORMABLE  
REMOVES CLEANLY FROM MOST SURFACES  
RESISTS ABRASION, SOLVENTS, MOISTURE

TEMPORARY SURFACE PROTECTION.  
SPlicing PLASTIC FILM MATERIALS.  
SURFACE AND LABEL OVER-LAMINATE.

Backing/Adhesive	PE Film / Acrylic	
Thickness	5.5 mil	0.140 mm
Adhesion to Steel	25 oz/in	2.74 N/cm
Tensile	11 lb/in	19.26 N/cm
Operating Temp	-40 - 190 °F	-40 - 88 °C
Colors	Clear, White, Tinted Orange, Blue	
Std Sizes	1 in, 2 in, 3 in x 108 Ft	

## PATCO 8100 Heavy-Duty Indoor PU Film



TOUGH, ABRASION-RESISTANT BACKING  
REPOSITIONABLE AND EASY TO APPLY  
ALL-TEMPERATURE PERFORMANCE  
AVAILABLE SELF WOUND OR WITH LINER  
SHORT OR LONG-TERM INDOOR SURFACE  
PROTECTION. MEDIA BLAST PROTECTION.  
ANTI-SQUEAK AND SOUND DAMPING.

Backing/Adhesive	PU Film / Urethane	
Thickness	9.4 mil	0.239 mm
Adhesion to Steel	45 oz/in	4.92 N/cm
Tensile	70 lb/in	122.59 N/cm
Operating Temp	-45 - 250 °F	-43 - 121 °C
Colors	Transparent	
Std Sizes	1 in, 2 in, 3 in x 108 Ft	

## POLYKEN 801 8 mil PE Screen Block



DURABLE AND SOLVENT RESISTANT  
REPOSITIONABLE AND CLEAN REMOVAL\*  
RESISTS TWISTING AND CURLING  
MASK AND PROTECT SCREEN EDGES FROM  
MOISTURE AND CHEMICALS DURING  
SCREEN PRINTING. TEMPORARY SURFACE  
PROTECTION AND MASKING.

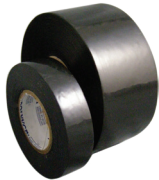
Backing/Adhesive	PE Film / Natural Rubber	
Thickness	8.0 mil	0.203 mm
Adhesion to Steel	60 oz/in	6.56 N/cm
Tensile	21 lb/in	36.78 N/cm
Operating Temp	40 - 200 °F	4 - 93 °C
Colors	Red	
Std Sizes	48 mm, 72 mm x 33M; 48 mm x 55M	

We also offer PVC and PP film  
masking tapes - turn to page 25!

# Plumbing and Electrical



## POLYKEN 823 Premium PE Electrical



**EXTREME WEATHER PERFORMANCE**  
**11500B DIELECTRIC STRENGTH**  
**RESISTS SOLVENTS AND MOISTURE**

ELECTRICAL WRAPPING, SPLICING, AND BUNDLING WHEN PVC MATERIALS ARE NOT PERMITTED.

Backing/Adhesive	PE Film / Natural Rubber	
Thickness	9.5 mils	0.241 mm
Adhesion to Steel	31 oz/in	3.39 N/cm
Tensile	17 lb/in	29.77 N/cm
Operating Temp	-40 - 180 °F	-40 - 82 °C
Colors	Black	
Std Sizes	1 in x 36Yd	

## POLYKEN 826 Premium PE/Butyl Pipe Wrap



**AGGRESSIVE PERMANENT BUTYL ADHESIVE**  
**MOISTURE AND ABRASION RESISTANT**  
**PERFORMS OVER WIDE TEMP RANGE**

INTERIOR/EXTERIOR/IN-GROUND  
CORROSION PROTECTION OF SMALL  
DIAMETER PIPE. USE WITH PRIMER.

Backing/Adhesive	PE Film / Butyl Rubber	
Thickness	12.0 mil	0.305 mm
Adhesion to Steel	40 oz/in	4.38 N/cm
Tensile	25 lb/in	43.78 N/cm
Operating Temp	-30 - 140 °F	-34 - 60 °C
Colors	Black, Yellow	
Std Sizes	48mm x 31M; 4in, 6in x 100Ft	

## POLYKEN 777 General Purpose PVC Electrical



**UL 510 CLASSIFIED**  
**CONFORMABLE AND STRETCHY**  
**EXCELLENT LONG-TERM ADHESION**

WRAPPING AND SPLICING ELECTRICAL CONNECTIONS. BUNDLING ELECTRICAL WIRES AND CORDS. UP TO 600V PER WRAP.

Backing/Adhesive	PVC Film / Rubber	
Thickness	7.0 mil	0.178 mm
Adhesion to Steel	20 oz/in	2.19 N/cm
Tensile	18 lb/in	31.52 N/cm
Operating Temp	40 - 180 °F	40 - 82 °C
Colors	Black	
Std Sizes	3/4in x 60Ft	

## NASHUA 102 Asbestos-Free Duct Seal



**NON-DRYING, LONG-TERM SEALING**  
**RESISTS WATER AND OUTDOOR EXPOSURE**  
**PAINTABLE, NON-STAINING**

SEALING ELECTRICAL CONDUIT OPENINGS AND JOINTS, ELECTRICAL POT HEADS, TERMINAL BOXES, BUSHINGS AGAINST WATER AND DIRT.

Material	Synthetic Polymers	
Dielectric Strength	100 volts/mil	
Installation Temp	25 - 140 °F	-4 - 49 °C
Operating Temp	-35 - 175 °F	-34 - 80 °C
Colors	Gray	
Std Sizes	1 lb pug	

## POLYKEN 711 Utility PVC Pipewrap



**TOUGH, DURABLE, CONFORMABLE**  
**EXCELLENT BOND TO SURFACES**  
**MOISTURE AND SOLVENT RESISTANT**

PROTECT PIPES AND JOINTS FROM CORROSION. INDUSTRIAL ASSEMBLY. MEETS UPC, ANSI, IAPMO STANDARDS.

Backing/Adhesive	PVC Film / Butyl Rubber	
Thickness	12.0 mil	0.305 mm
Adhesion to Steel	15 oz/in	1.64 N/cm
Tensile	20 lb/in	35.03 N/cm
Operating Temp	0 - 200 °F	-18 - 93 °C
Colors	Printed Black	
Std Sizes	48mm x 31M	

## POLYKEN B17 General Purpose PVC Electrical



**UL 510 CLASSIFIED**  
**CONFORMABLE AND STRETCHY**  
**EXCELLENT LONG-TERM ADHESION**

WRAPPING AND SPLICING ELECTRICAL CONNECTIONS. BUNDLING WIRES AND CORDS. 9500V DIELECTRIC STRENGTH.

Backing/Adhesive	PVC Film / Rubber	
Thickness	7.0 mil	0.178 mm
Adhesion to Steel	25 oz/in	2.74 N/cm
Tensile	20 lb/in	35.03 N/cm
Operating Temp	40 - 180 °F	40 - 82 °C
Colors	Blue, Green, Red, White, Yellow	
Std Sizes	3/4in x 66Ft	

## NASHUA Stretch & Seal® Self-Fusing Silicone



**BONDS TO ITSELF - NO ADHESIVE RESIDUE**  
**HIGH TEMPERATURE RESISTANCE**  
**RESISTS WATER, SOLVENTS, ABRASION**

ELECTRICAL CONNECTIONS, LIGHT-DUTY PIPE WRAPPING, BUNDLING, CLAMPING, AND WATERPROOFING.

Material	Self-Fusing Silicone	
Thickness	20.0 mil	0.508 mm
Tensile	315 lb/in	551.65 N/cm
Operating Temp	-65 - 500 °F	-54 - 260 °C
Colors	Black, Clear, White, Blue, Red	
Std Sizes	1 in x 10Ft	

## POLYKEN 509W/510W/513W PTFE Thread Seal



**EXTREME TEMPERATURE PERFORMANCE**  
**EASY TO INSTALL**  
**HELPS PREVENT LEAKS**

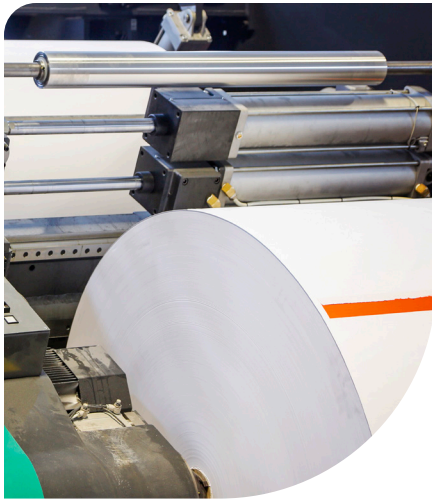
SELF-LUBRICATES JOINTS AND PIPE ENDS MAKING THEM EASY TO ASSEMBLE AND DISASSEMBLE FOR A LEAK-PROOF SEAL.

Material	PTFE Film	
Thickness	3.5 mil	0.089 mm
Pressure Rating	<10,000 psi	
Operating Temp	-450 - 500 °F	-268 - 260 °C
Colors	White	
Std Sizes	0.5in, 0.75in x 260in or 520in	

\*From Most Surfaces.



# PET Film/ Splicing Tapes



## POLYKEN 784 PET Film/Silicone



TOUGH POLYESTER FILM BACKING  
EXCELLENT ADHESION TO LSE MATERIALS  
HIGH ADHESION AND SHEAR STRENGTH  
PREMIUM HIGH TEMPERATURE SPLICING  
FOR LSE MATERIALS, COATED/UNCOATED  
PAPER, CORRUGATE, FOIL, AND TAPES.

Backing/Adhesive	PET Film / Silicone / PET Film Liner	
Thickness	3.0 mil	0.076 mm
Adhesion to Steel	35 oz/in	3.83 N/cm
Tensile	25 lb/in	43.78 N/cm
Operating Temp	0 - 400 °F	-18 - 204 °C
Colors	Transparent Blue, Transparent Red	
Std Sizes	2in, 3in x 72Yd	

## POLYKEN 126/726 Double-Coated PET Splicing



STRONG AND CONFORMABLE  
MOISTURE RESISTANT  
EXCELLENT TEMPERATURE RESISTANCE  
CORRUGATE AND FOIL SPLICING.  
PAPER CONVERTING. LAMINATING AND  
MOUNTING PRINT PLATES AND FRAMES.

Carrier/Adhesive	PET Film / Acrylic / Kraft Liner	
Thickness	3.8 mils	0.097 mm
Adhesion to Steel	25 oz/in	2.74 N/cm
Tensile	6 lb/in	10.51 N/cm
Operating Temp	0 - 395 °F	-18 - 202 °C
Colors	Clear (126), Red (726)	
Std Sizes	1in, 1.5in, 2in x 60Yd	

## POLYKEN 781 PET Film/Silicone - Self Wound



TOUGH POLYESTER FILM BACKING  
EXCELLENT ADHESION TO LSE MATERIALS  
SELF- WOUND FOR EASE OF USE

PREMIUM HIGH TEMPERATURE SPLICING  
FOR CORRUGATE, FOIL, PAPER, TAPE, AND  
RELEASE-COATED MATERIALS.

Backing/Adhesive	PET Film / Silicone	
Thickness	2.8 mils	0.071 mm
Adhesion to Steel	35 oz/in	3.83 N/cm
Tensile	25 lb/in	43.78 N/cm
Operating Temp	0 - 395 °F	-18 - 202 °C
Colors	Transparent Blue, Transparent Red	
Std Sizes	2 in, 3in x 72Yd	

## PATCO 6033 PET Film/Silicone - Clear



HIGH STRENGTH POLYESTER FILM  
GOOD PUNCTURE AND TEAR RESISTANCE  
AGGRESSIVE ADHESION

SPLICING PAPER, PHOTOGRAPHIC FILM,  
AND LSE MATERIALS. FLASH-BREAKER.  
AUTOCLAVING. BORDER AND BLOCK-OUT.

Backing/Adhesive	PET Film / Silicone	
Thickness	3.5 mil	0.089 mm
Adhesion to Steel	28 oz/in	3.06 N/cm
Tensile	50 lb/in	87.56 N/cm
Operating Temp	-40 - 300 °F	-40 - 149 °C
Colors	Clear	
Std Sizes	2 in, 3in x 108Ft	

## POLYKEN 065/066 Acrylic Transfer Adhesive

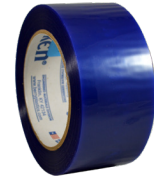


THIN FOR LOW-PROFILE SPLICES  
FAST TACK, SECURE BOND  
IDEAL FOR HIGH SPEED SPLICING

SPLICING CORRUGATE, PAPER, AND  
FOIL. PRINTING AND PLATE MOUNTING.  
LAMINATING AND BONDING.

Adhesive/Liner	Fiber-Filled Acrylic / Kraft Liner	
Thickness	2.1 mil	0.053 mm
Adhesion to Steel	24 oz/in	2.63 N/cm
Operating Temp	0 - 395 °F	-18 - 202 °C
Colors	Clear (065), Red (066)	
Std Sizes	1.5in, 2in x 60Yd	

## POLYKEN 784SW PET Film/Silicone - Self Wound



TOUGH POLYESTER FILM BACKING  
EXCELLENT ADHESION TO LSE MATERIALS  
SELF- WOUND FOR EASE OF USE

PREMIUM HIGH TEMPERATURE SPLICING  
FOR CORRUGATE, FOIL, PAPER, TAPE, AND  
RELEASE-COATED MATERIALS.

Backing/Adhesive	PET Film / Silicone	
Thickness	3.0 mils	0.076 mm
Adhesion to Steel	40 oz/in	4.38 N/cm
Tensile	25 lb/in	43.78 N/cm
Operating Temp	0 - 400 °F	-18 - 204 °C
Colors	Transparent Blue	
Std Sizes	2in x 72Yd	

## PATCO 6035 PET Film/Silicone - Metalized



HIGH-VISIBILITY METALIZED PET FILM  
GOOD PUNCTURE AND TEAR RESISTANCE  
AGGRESSIVE ADHESION

SPLICING PAPER, PHOTOGRAPHIC FILM,  
AND LSE MATERIALS. REFLECTIVE SPLICE  
DETECTION. AUTOCLAVING.

Backing/Adhesive	Metalized PET Film / Silicone	
Thickness	3.5 mil	0.089 mm
Adhesion to Steel	30 oz/in	3.28 N/cm
Tensile	45 lb/in	78.81 N/cm
Operating Temp	-40 - 300 °F	-40 - 149 °C
Colors	Metallic	
Std Sizes	2in, 3in x 108Ft	

# Polyken Foil & Insulation Tapes

Polyken offers a full line of foil tapes for commercial and industrial duct sealing, insulation jacket seaming and sealing, maintenance and repair, surface protection, cooler/refrigerator repair, waterproof sealing, and more. Polyken offers a variety of adhesive systems including synthetic rubber, butyl rubber, and acrylics as well as a variety of foil thicknesses and even laminates to suit the needs of a broad range of demanding applications and operating conditions.

## POLYKEN 337 Multi-Purpose Foil



**CONFORMABLE AND TOUGH  
EXCELLENT TACK AND ADHESION  
LOW VOC - CAN CONTRIBUTE TO LEED®**

SEAL DUCT WORK FOR HVAC SYSTEMS.  
INSULATION SEAMING AND PATCHING.  
GENERAL REPAIRS AND MAINTENANCE.

Adhesive/Liner	Synthetic Rubber / Kraft	
Foil Thickness	1.75 mil	0.044 mm
Thickness (w/o Lnr)	3.7 mil	0.094 mm
Adhesion to Steel	100 oz/in	10.94 N/cm
Tensile	14 lb/in	24.52 N/cm
Operating Temp	40 - 200 °F	4 - 93 °C
Std Sizes	48mm, 72mm x 46M	

## POLYKEN 332 Utility Foil



**CONFORMABLE FOIL FACER  
HIGH TACK AND ADHESION  
EASY TO USE AND INSTALL**

INSULATION SEAMING AND PATCHING.  
NON-CRITICAL DUCT SEALING. GENERAL  
REPAIRS AND MAINTENANCE USES.

Adhesive/Liner	Synthetic Rubber / Kraft	
Foil Thickness	1.5 mil	0.038 mm
Thickness (w/o Lnr)	3.2 mil	0.081 mm
Adhesion to Steel	75 oz/in	8.21 N/cm
Tensile	11 lb/in	19.26 N/cm
Operating Temp	40 - 200 °F	4 - 93 °C
Std Sizes	48mm, 72mm x 46M	

## POLYKEN 330X Premium Extreme Weather Foil



**CONFORMABLE AND TOUGH  
EXTREME TEMPERATURE PERFORMANCE  
LOW VOC - CAN CONTRIBUTE TO LEED®**

SEAL DUCT WORK FOR HVAC SYSTEMS.  
INSULATION SEAMING AND PATCHING.  
GENERAL REPAIRS AND MAINTENANCE.

Adhesive/Liner	Acrylic / Kraft	
Foil Thickness	1.75 mil	0.044 mm
Thickness (w/o Lnr)	3.5 mil	0.089 mm
Adhesion to Steel	55 oz/in	6.02 N/cm
Tensile	14 lb/in	24.52 N/cm
Operating Temp	-35 - 260 °F	-37 - 127 °C
Std Sizes	48mm, 72mm x 46M	

## POLYKEN 340X Utility Extreme Weather Foil



**CONFORMABLE FOIL FACER  
EXTREME TEMPERATURE PERFORMANCE  
EASY TO USE**

INSULATION SEAMING AND PATCHING.  
NON-CRITICAL DUCT SEALING. GENERAL  
REPAIRS AND MAINTENANCE USES.

Adhesive/Liner	Acrylic / Kraft	
Foil Thickness	1.5 mil	0.038 mm
Thickness (w/o Lnr)	3.0 mil	0.076 mm
Adhesion to Steel	45 oz/in	4.92 N/cm
Tensile	11 lb/in	19.26 N/cm
Operating Temp	-35 - 260 °F	-37 - 127 °C
Std Sizes	48mm, 72mm x 46M	

## POLYKEN 335FT High Temperature Foil

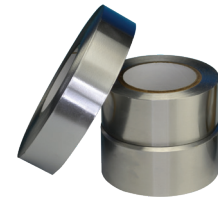


**RESISTS UV, MOLD, AND MOISTURE  
EXTREME HIGH TEMP USES UP TO 500 °F  
EXCELLENT QUICK STICK**

SEALS SEAMS AND CLOSURES IN HIGH HEAT  
FLUE INSTALLATIONS. HIGH EFFICIENCY  
FURNACE-CERTIFIED PLASTIC VENT PIPES.  
HEAT SHIELDING AND WELDING.

Adhesive/Liner	Acrylic / Kraft	
Foil Thickness	1.75 mil	0.044 mm
Thickness (w/o Lnr)	3.8 mil	0.097 mm
Adhesion to Steel	35 oz/in	3.83 N/cm
Tensile	14 lb/in	24.52 N/cm
Operating Temp	-50 - 500 °F	-46 - 260 °C
Std Sizes	48mm, 72mm x 46M	

## POLYKEN 345SW Heavy-Duty Self-Wound Foil



**THICK, DURABLE FOIL FACER  
SELF-WOUND CONSTRUCTION  
EXCELLENT ADHESION AND SHEAR  
MEETS L-T-80B & SAE AMS-T-23397B**

SEALING AND MASKING APPLICATIONS  
FOR AEROSPACE. HEAT SHIELD. MOISTURE  
BARRIER AND SURFACE PROTECTION.

Adhesive	Acrylic	
Foil Thickness	3.0 mil	0.076 mm
Thickness	5.0 mil	0.127 mm
Adhesion to Steel	68 oz/in	7.44 N/cm
Tensile	26 lb/in	45.53 N/cm
Operating Temp	-40 - 350 °F	-40 - 177 °C
Std Sizes	2in, 3in x 60Yd	
Also available with liner as POLYKEN 347.		





### POLYKEN 360-17 Foilmastic® Butyl Sealing



INSTANT AIR AND WATER-TIGHT BOND  
THICK BUTYL ADHESIVE FILLS GAPS  
PERMANENT SEALS TO MANY SURFACES

DUCT JOINT SEALING. SHEET METAL  
REPAIRS FOR TRAILERS, ROOFING,  
GUTTERS, ETC. INDOOR/OUTDOOR USES.

Adhesive/Liner	Butyl Rubber / LDPE	
Foil Thickness	2.0 mil	0.051 mm
Thickness (w/o Lnr)	17.0 mil	0.432 mm
Adhesion to Steel	200 oz/in	21.88 N/cm
Tensile	20 lb/in	35.03 N/cm
Operating Temp	40 - 200 °F	4 - 93 °C
Std Sizes	2in, 2.5in, 3in, 4in x 33.3 Yd	

### POLYKEN 338 Foil-Scrim-Kraft Insulation



CONFORMABLE, TOUGH, TEAR-RESISTANT  
EXCELLENT TACK AND ADHESION  
LOW VOC - CAN CONTRIBUTE TO LEED®

SEAL AND PATCH FSK-FACED DUCT  
BOARDS AND INSULATION MATERIALS.  
GENERAL REPAIRS AND MAINTENANCE.

Backing/Adhesive	Foil/Scrim/Kraft Laminate / Synthetic Rubber / Kraft	
Thickness (w/o Lnr)	9.25 mil	0.235 mm
Adhesion to Steel	70 oz/in	7.66 N/cm
Tensile	30 lb/in	52.54 N/cm
Operating Temp	40 - 200 °F	4 - 93 °C
Std Sizes	72 mm x 46M	

### POLYKEN 438 Extreme Weather FSK



CONFORMABLE, TOUGH, TEAR-RESISTANT  
EXTREME TEMPERATURE PERFORMANCE  
LOW VOC - CAN CONTRIBUTE TO LEED®

SEAL AND PATCH FSK-FACED DUCT BOARD  
AND INSULATION MATERIALS IN EXTREME  
TEMPERATURES OR HIGH HUMIDITY.

Backing/Adhesive	Foil/Scrim/Kraft Laminate / Acrylic / Kraft	
Thickness (w/o Lnr)	9.5 mils	0.241 mm
Adhesion to Steel	75 oz/in	8.21 N/cm
Tensile	33 lb/in	57.79 N/cm
Operating Temp	-35 - 260 °F	-37 - 127 °C
Std Sizes	72mm x 46M, 4in x 50Yd	

### POLYKEN 348 ASJ All-Service Jacketing



CONFORMABLE, TOUGH, TEAR-RESISTANT  
EXCELLENT TACK AND ADHESION  
LOW VOC - CAN CONTRIBUTE TO LEED®

SEAL AND PATCH ASJ-FACED INDUSTRIAL  
INSULATION JACKETING MATERIALS.  
GENERAL REPAIRS AND MAINTENANCE.

Backing/Adhesive	Kraft/Scrim/Foil Laminate / Acrylic / Kraft	
Thickness (w/o Lnr)	11.0 mil	0.279 mm
Adhesion to Steel	50 oz/in	5.47 N/cm
Tensile	45 lb/in	78.81 N/cm
Operating Temp	-35 - 260 °F	-37 - 127 °C
Colors	White	
Std Sizes	72mm x 46M	

### POLYKEN 334CRT Foil Laminate - Cooler Repair



LAMINATE BACKING RESISTS PUNCTURE  
EXCELLENT TACK AND ADHESION  
PERFORMS WELL IN COLD/HIGH MOISTURE

SEALS SEAMS, CORNERS, AND CRACKS  
AGAINST AIR LEAKAGE IN FREEZER UNITS,  
TRAILERS, AND WALK-IN COOLERS.

Backing/Adhesive	Foil Laminate / Acrylic / Kraft	
Thickness (w/o Lnr)	10.2 mils	0.259 mm
Adhesion to Steel	100 oz/in	10.94 N/cm
Tensile	70 lb/in	122.59 N/cm
Operating Temp	-30 - 270 °F	-34 - 132 °C
Colors	Metallic Silver, White	
Std Sizes	4 in x 15 Yd	

### POLYKEN 358WMP ASJ-WMP Insulation Jacketing



HIGH STRENGTH LAMINATE BACKING  
EXCELLENT AIR AND MOISTURE BARRIER  
SUPER HIGH TACK, AGGRESSIVE BOND

VAPOR BARRIER SEAL FOR ASJ-WMP FACED  
INDUSTRIAL INSULATION AND THERMAL  
JACKETING. SEALING AND REPAIR USES.

Backing/Adhesive	PP Film/Scrim/Foil Laminate / Acrylic / Kraft	
Thickness (w/o Lnr)	8.8 mil	0.224 mm
Adhesion to Steel	50 oz/in	5.47 N/cm
Tensile	45 lb/in	78.81 N/cm
Operating Temp	-35 - 260 °F	-37 - 127 °C
Colors	White	
Std Sizes	72mm x 46M	



# Nashua Foil & Insulation Tapes

Nashua Tapes selection includes a variety of foil and foil laminate tapes designed for duct and insulation sealing, general maintenance and repair, waterproof sealing, and more. With adhesive systems including synthetic rubber, butyl rubber, and acrylics, Nashua has a tape to suit the needs of a broad range of demanding applications and operating conditions.

## NASHUA 322 Multi-Purpose Foil



**CONFORMABLE AND TOUGH  
EXCELLENT TACK AND ADHESION  
LOW VOC - CAN CONTRIBUTE TO LEED®**

SEAL DUCT WORK FOR HVAC SYSTEMS.  
INSULATION SEAMING AND PATCHING.  
GENERAL REPAIRS AND MAINTENANCE.

Adhesive/Liner	Synthetic Rubber / Kraft	
Foil Thickness	2.0 mil	0.051 mm
Thickness (w/o Lnr)	5.0 mil	0.127 mm
Adhesion to Steel	130 oz/in	14.22 N/cm
Tensile	15 lb/in	26.27 N/cm
Operating Temp	40 - 200 °F	4 - 93 °C
Std Sizes	48 mm, 72 mm x 46 M	

## NASHUA 330X Premium Extreme Weather Foil



**CONFORMABLE AND TOUGH  
EXTREME TEMPERATURE PERFORMANCE  
LOW VOC - CAN CONTRIBUTE TO LEED®**

SEAL DUCT WORK FOR HVAC SYSTEMS.  
INSULATION SEAMING AND PATCHING.  
GENERAL REPAIRS AND MAINTENANCE.

Adhesive	Acrylic / Kraft	
Foil Thickness	1.75 mil	0.044 mm
Thickness (w/o Lnr)	3.5 mil	0.089 mm
Adhesion to Steel	55 oz/in	6.02 N/cm
Tensile	14 lb/in	24.52 N/cm
Operating Temp	-35 - 260 °F	-37 - 127 °C
Std Sizes	48 mm, 72 mm x 46 M	

## NASHUA 230X Utility Extreme Weather Foil



**CONFORMABLE FOIL FACER  
EXTREME TEMPERATURE PERFORMANCE  
EASY TO USE**

INSULATION SEAMING AND PATCHING.  
NON-CRITICAL DUCT SEALING. GENERAL  
REPAIRS AND MAINTENANCE USES.

Adhesive/Liner	Acrylic / Kraft	
Foil Thickness	1.5 mil	0.038 mm
Thickness (w/o Lnr)	3.0 mil	0.076 mm
Adhesion to Steel	45 oz/in	4.92 N/cm
Tensile	11 lb/in	19.26 N/cm
Operating Temp	-35 - 260 °F	-37 - 127 °C
Std Sizes	48 mm, 72 mm x 46 M	

## NASHUA FSK Foil-Scrim-Kraft Insulation



**CONFORMABLE, TOUGH, TEAR-RESISTANT  
EXCELLENT TACK AND ADHESION  
LOW VOC - CAN CONTRIBUTE TO LEED®**

SEAL AND PATCH FSK-FACED DUCT  
BOARDS AND INSULATION MATERIALS.  
GENERAL REPAIRS AND MAINTENANCE.

Backing/Adhesive	Foil/Scrim/Kraft Laminate / Synthetic Rubber / Kraft	
Thickness (w/o Lnr)	9.25 mil	0.235 mm
Adhesion to Steel	70 oz/in	7.66 N/cm
Tensile	35 lb/in	61.29 N/cm
Operating Temp	40 - 200 °F	4 - 93 °C
Std Sizes	48 mm, 72 mm x 46 M	

## NASHUA 438 Extreme Weather FSK



**CONFORMABLE, TOUGH, TEAR-RESISTANT  
EXTREME TEMPERATURE PERFORMANCE  
LOW VOC - CAN CONTRIBUTE TO LEED®**

SEAL AND PATCH FSK-FACED DUCT BOARD  
AND INSULATION MATERIALS IN EXTREME  
TEMPERATURES OR HIGH HUMIDITY.

Backing/Adhesive	Foil/Scrim/Kraft Laminate / Acrylic / Kraft	
Thickness (w/o Lnr)	9.5 mils	0.241 mm
Adhesion to Steel	75 oz/in	8.21 N/cm
Tensile	33 lb/in	57.79 N/cm
Operating Temp	-35 - 260 °F	-37 - 127 °C
Std Sizes	72 mm x 46 M	

## NASHUA ASJ All-Service Jacketing Insulation



**CONFORMABLE, TOUGH, TEAR-RESISTANT  
SUPERIOR TEMPERATURE PERFORMANCE  
LOW VOC - CAN CONTRIBUTE TO LEED®**

SEAL AND PATCH ASJ-FACED INDUSTRIAL  
INSULATION JACKETING MATERIALS.  
GENERAL REPAIRS AND MAINTENANCE.

Backing/Adhesive	Kraft/Scrim/Foil Laminate / Acrylic / Kraft	
Thickness (w/o Lnr)	11.0 mil	0.279 mm
Adhesion to Steel	50 oz/in	5.47 N/cm
Tensile	45 lb/in	78.81 N/cm
Operating Temp	-35 - 260 °F	-37 - 127 °C
Colors	White	
Std Sizes	72 mm x 46 M	



**NASHUA 314CRT**  
Foil Laminate - Cooler Repair



LAMINATE BACKING RESISTS PUNCTURE  
EXCELLENT TACK AND ADHESION  
PERFORMS WELL IN COLD/HIGH MOISTURE

SEALS SEAMS, CORNERS, AND CRACKS  
AGAINST AIR LEAKAGE IN FREEZER UNITS,  
TRAILERS, AND WALK-IN COOLERS.

Backing/Adhesive	Foil Laminate / Acrylic / Kraft	
Thickness (w/o Lnr)	10.2 mils	0.259 mm
Adhesion to Steel	100 oz/in	10.94 N/cm
Tensile	70 lb/in	122.59 N/cm
Operating Temp	-30 - 270 °F	-34 - 132 °C
Colors	Metallic Silver, White	
Std Sizes	4in x 15Yd	

**NASHUA 361-11**  
Waterproofing Repair



INSTANT AIR AND WATER-TIGHT BOND  
CONFORMABLE AND TOUGH  
PERMANENT SEALS TO MANY SURFACES

DUCT JOINT SEALING. SHEET METAL  
REPAIRS FOR TRAILERS, ROOFING,  
GUTTERS, ETC. INDOOR/OUTDOOR USES.

Adhesive/Liner	Butyl Rubber / LDPE	
Foil Thickness	2.0 mil	0.051 mm
Thickness (w/o Lnr)	11.0 mil	0.279 mm
Adhesion to Steel	75 oz/in	8.21 N/cm
Tensile	20 lb/in	35.03 N/cm
Operating Temp	20 - 200 °F	-7 - 93 °C
Std Sizes	48mm x 10M	

**NASHUA 327**  
Butyl-Mastic Sealing



CLASSIFIED  
**UL**  
UL 723 CLASSIFIED  
FOR SURFACE BURNING  
CHARACTERISTICS

INSTANT AIR AND WATER-TIGHT BOND  
THICK BUTYL ADHESIVE FILLS GAPS  
PERMANENT SEALS TO MANY SURFACES

DUCT JOINT SEALING. SHEET METAL  
REPAIRS FOR TRAILERS, ROOFING,  
GUTTERS, ETC. INDOOR/OUTDOOR USES.

Adhesive/Liner	Butyl Rubber / LDPE	
Foil Thickness	2.0 mil	0.051 mm
Thickness (w/o Lnr)	17.0 mil	0.432 mm
Adhesion to Steel	200 oz/in	21.88 N/cm
Tensile	20 lb/in	35.03 N/cm
Operating Temp	40 - 200 °F	4 - 93 °C
Std Sizes	48mm, 72mm x 31 M	

**Did you know...?** LEED® (Leadership in Energy and Environmental Design) was developed by the United States Green Building Council in 1998 as a rating system for “green” buildings. Buildings can be certified “LEED”, “LEED Silver”, “LEED Gold” or “LEED Platinum”. The certification is based on points accumulated across six major categories: Sustainable Sites, Energy and Atmosphere, Materials and Resources, Indoor Environmental Quality, Water Efficiency, and Innovation. Each of these factors has many sub categories.

Under the Indoor Environmental Quality (IEQ) standard, using products with low VOC (Volatile Organic Compounds) content can help contribute towards the overall energy efficiency of the building. Berry Global proudly offers products with low VOC content including duct tapes (<1 g/L), foil tapes (<30 g/L), and spray adhesives (<40% by weight) that can help contribute to earning IEQ points for LEED projects. For more information, contact Berry’s sales or customer care team today!

LEED® IS A REGISTERED TRADEMARK OF U.S. GREEN BUILDING COUNCIL, INC.



# Building & Construction Tapes

With materials engineered for high performance in demanding construction applications, Polyken Tapes have been protecting investments for more than fifty years. Builders, contractors, and architects around the world rely on Polyken Tapes for adhesive products used in commercial, residential, and multi-family construction applications. Utilizing premium butyl rubber adhesives, many of our flashing tapes meet AAMA-711 and ASTM E-2112 standards and come backed by a 15-Year Limited Manufacturer's Warranty.

## 626-20 Foilastic® Window & Door Flashing



INDEFINITE OUTDOOR UV EXPOSURE  
REMAINS PLIABLE IN HIGH OR LOW TEMPS  
COMPATIBLE WITH SEALANTS/CAULKING  
15-YEAR LTD MANUFACTURER WARRANTY

FLASHING AROUND WINDOW AND  
DOOR INSTALLATIONS, CORNER-BOARD  
ABUTMENTS, SIDEWALL SHEATHING  
SEAMS, DECK-TO-WALL JOINTS, AND  
OTHER PENETRATION AREAS.

Backing/Adhesive	Printed Foil / Butyl Rubber / Kraft	
Thickness (w/o Lnr)	20.0 mil	0.508 mm
Adhesion to Steel	279 oz/in	30.52 N/cm
Tensile	18 lb/in	31.52 N/cm
Install Temp	30 - 180 °F	-1 - 82 °C
Operating Temp	-30 - 200 °F	-34 - 93 °C
Std Sizes	4in, 6in x 100Ft	

## 627-20 Shadowlastic® Plus Window & Door Flashing



UP TO 3 YEAR OUTDOOR UV EXPOSURE  
REMAINS PLIABLE IN HIGH OR LOW TEMPS  
COMPATIBLE WITH SEALANTS/CAULKING  
15-YEAR LTD MANUFACTURER WARRANTY

FLASHING AROUND WINDOW AND  
DOOR INSTALLATIONS, CORNER-BOARD  
ABUTMENTS, SIDEWALL SHEATHING  
SEAMS, DECK-TO-WALL JOINTS, AND  
OTHER PENETRATION AREAS.

Backing/Adhesive	Woven PP / Butyl Rubber / Kraft	
Thickness	20.0 mil	0.508 mm
Adhesion to Steel	219 oz/in	23.96 N/cm
Tensile	59 lb/in	103.33 N/cm
Install Temp	30 - 180 °F	-1 - 82 °C
Operating Temp	-30 - 200 °F	-34 - 93 °C
Colors	Printed Black	
Std Sizes	4in, 6in, 9in x 100Ft	

## 630-14 Shadowlastic® Extreme Window & Door Flashing



UP TO 3 YEAR OUTDOOR UV EXPOSURE  
EXCELLENT COLD TEMP ADHESION  
COMPATIBLE WITH SEALANTS/CAULKING  
15-YEAR LTD MANUFACTURER WARRANTY

FLASHING AROUND WINDOW AND  
DOOR INSTALLATIONS, CORNER-BOARD  
ABUTMENTS, SIDEWALL SHEATHING  
SEAMS, DECK-TO-WALL JOINTS, AND  
OTHER PENETRATION AREAS.

Backing/Adhesive	Woven PP / Butyl Rubber / Kraft	
Thickness	14.5 mil	0.368 mm
Adhesion to Steel	63 oz/in	6.89 N/cm
Tensile	59 lb/in	103.33 N/cm
Install Temp	10 - 180 °F	-12 - 82 °C
Operating Temp	-30 - 200 °F	-34 - 93 °C
Colors	Printed Black	
Std Sizes	4in, 6in, 9in x 75Ft	

## 626-35 Foilastic® Roof & Commercial Flashing



INDEFINITE OUTDOOR UV EXPOSURE  
REMAINS PLIABLE IN HIGH OR LOW TEMPS  
COMPATIBLE WITH SEALANTS/CAULKING  
15-YEAR LTD MANUFACTURER WARRANTY

FLASHING ROOF RIDGE AND HIP LINES,  
COMMERCIAL WINDOW AND DOOR  
INSTALLATIONS, SKYLIGHTS, DORMERS,  
AND OTHER PENETRATION AREAS.

Backing/Adhesive	Foil / Butyl Rubber / LDPE	
Thickness (w/o Lnr)	35.0 mil	0.889 mm
Adhesion to Steel	264 oz/in	28.88 N/cm
Tensile	20 lb/in	35.03 N/cm
Install Temp	30 - 180 °F	-1 - 82 °C
Operating Temp	-30 - 200 °F	-34 - 93 °C
Std Sizes	48mm x 15M; 3in, 4in, 6in, 9in, 12in x 50Ft	

## 627-35 Shadowlastic® Plus Roof & Commercial Flashing



UP TO 3 YEAR OUTDOOR UV EXPOSURE  
REMAINS PLIABLE IN HIGH OR LOW TEMPS  
COMPATIBLE WITH SEALANTS/CAULKING  
15-YEAR LTD MANUFACTURER WARRANTY

FLASHING ROOF RIDGE AND HIP LINES,  
COMMERCIAL WINDOW AND DOOR  
INSTALLATIONS, SKYLIGHTS, DORMERS,  
AND OTHER PENETRATION AREAS.

Backing/Adhesive	Woven PP / Butyl Rubber / Kraft	
Thickness	35.0 mil	0.889 mm
Adhesion to Steel	229 oz/in	25.05 N/cm
Tensile	59 lb/in	103.33 N/cm
Install Temp	30 - 180 °F	-1 - 82 °C
Operating Temp	-30 - 200 °F	-34 - 93 °C
Color	Printed Black	
Std Sizes	6in, 9in, 12in x 50Ft	

## POLYKEN 629 Seam & Seal® Housewrap Tape



UV RESISTANT FOR OUTDOOR USE  
TOUGH, DURABLE, HAND-TEARABLE  
SECURE BOND TO HOUSEWRAP

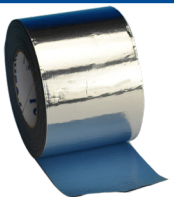
SEAL, SEAM, PATCH, AND REPAIR  
HOUSEWRAP AND INTERIOR/EXTERIOR  
VAPOR BARRIER MATERIALS. SEAL  
EXTERIOR WALL SHEATHING JOINTS AND  
EXTRUDED FOAM PRODUCTS.

Backing/Adhesive	BOPP Film / Solvent Acrylic	
Thickness	3.2 mil	0.081 mm
Adhesion to Steel	50 oz/in	5.47 N/cm
Tensile	32 lb/in	56.04 N/cm
Install Temp	-5 - 180 °F	-20 - 82 °C
Operating Temp	-40 - 212 °F	-40 - 100 °C
Colors	White, Red, Clear	
Std Sizes	48mm, 72mm x 50M	





**POLYKEN 360-35**  
Foilmastic® Butyl Sealing



INSTANT AIR AND WATER-TIGHT BOND  
PREMIUM BUTYL ADHESIVE FILLS GAPS  
PERMANENT SEALS TO MANY SURFACES  
DUCT JOINT SEALING. SHEET METAL  
REPAIRS FOR TRAILERS, ROOFING,  
GUTTERS, AND MORE. WINDOW AND  
DOOR FLASHING. INSULATION SEAMING.

Backing/Adhesive	Foil / Butyl Rubber / LDPE	
Foil Thickness	2.0 mil	0.051 mm
Thickness (w/o Lnr)	35.0 mil	0.889 mm
Adhesion to Steel	160 oz/in	17.50 N/cm
Tensile	20 lb/in	35.03 N/cm
Operating Temp	40 - 200 °F	4 - 93 °C
Std Sizes	48 mm x 15M; 3in, 4in x 50Ft	

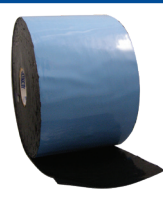
**POLYKEN 360-45**  
Foilmastic® Butyl Sealing



INSTANT AIR AND WATER-TIGHT BOND  
THICK BUTYL ADHESIVE FILLS GAPS  
PERMANENT SEALS TO MANY SURFACES  
WINDOW, DOOR, AND ROOF FLASHING.  
SHEET METAL REPAIRS FOR TRAILERS,  
ROOFING, GUTTERS, AND MORE. INDOOR  
AND OUTDOOR USES.

Backing/Adhesive	Foil / Butyl Rubber / LDPE	
Foil Thickness	2.0 mil	0.051 mm
Thickness (w/o Lnr)	45.0 mil	1.143 mm
Adhesion to Steel	63 oz/in	6.89 N/cm
Tensile	20 lb/in	35.03 N/cm
Operating Temp	40 - 200 °F	4 - 93 °C
Std Sizes	48 mm x 9M; 3in, 4in, 6in, 12in x 30Ft	

**POLYKEN 860**  
Butyl Roadblock



PERMANENT BUTYL ADHESIVE  
RESISTS ABRASION AND MOISTURE  
BONDS TO EXTREMELY ROUGH SURFACES

USED TO SECURE TRAFFIC COUNTERS AND  
OTHER MATERIALS TO ASPHALT AND ROAD  
SURFACES. PERMANENT WIRE HOLD DOWN.

Backing/Adhesive	PE Film / Butyl Rubber / LDPE	
Thickness	55.0 mils	1.397 mm
Adhesion to Steel	120 oz/in	13.13 N/cm
Tensile	38 lb/in	66.55 N/cm
Operating Temp	10 - 140 °F	-12 - 60 °C
Colors	Black	
Std Sizes	4in, 6in x 75Ft	

**Always Advancing to Protect What's Important...**

In addition to our trusted Polyken brand of construction tapes, Berry also offers private label and OEM adhesive tape solutions. At our manufacturing facility in Franklin, Kentucky, USA, our adhesive engineers combine manufacturing know-how with superior technical expertise to produce the finest quality, highest performance tapes available on the market.

We currently offer turn-key AAMA-711 Verified Components-listed flashing tapes OR our team of engineers can work with you to develop a customized solution using our standard materials or your own proprietary material to meet your unique performance criteria and branding.



**Contact Berry Global today to learn how we can partner with you on customized construction tape solutions!**

# Paper Masking Tapes

Nashua paper masking tapes help you get construction, abatement, household, office, and industrial painting and surface protection jobs done right the first time. From our utility grade crepe masking tape to our premium 14-day painter's masking tape, we have the product for your application.



## NASHUA MT100 Utility Masking



CONFORMABLE, MOISTURE RESISTANT  
OFFERS UP TO 24 HOURS CLEAN REMOVAL  
ADHERES TO A VARIETY OF SURFACES

GENERAL HOUSEHOLD AND OFFICE  
MASKING USES. BUNDLING, LABELING,  
AND PACKAGING.

Backing/Adhesive	Crepe Paper / Rubber	
Thickness	4.8 mils	0.122 mm
Adhesion to Steel	42 oz/in	4.59 N/cm
Tensile	16 lb/in	28.02 N/cm
Operating Temp	40 - 150 °F	4 - 65 °C
Colors	Natural	
Std Sizes	18mm, 24mm, 36 mm, 48mm x 55M	

## NASHUA MT300 Multi-Purpose Masking



CONFORMABLE, MOISTURE RESISTANT  
OFFERS 24-72 HOURS CLEAN REMOVAL  
ADHERES TO A VARIETY OF SURFACES

INDOOR/OUTDOOR HOUSEHOLD  
AND NON-CRITICAL PAINT MASKING,  
BUNDLING, LABELING, AND PACKAGING.

Backing/Adhesive	Crepe Paper / Rubber	
Thickness	6.0 mils	0.152 mm
Adhesion to Steel	38 oz/in	4.16 N/cm
Tensile	22 lb/in	38.53 N/cm
Operating Temp	40 - 180 °F	4 - 82 °C
Colors	Natural	
Std Sizes	24mm, 36 mm, 48mm, 72mm x 55M	

## NASHUA 140B 14-Day Painter's Masking



UV, MOISTURE, SOLVENT RESISTANT  
OFFERS UP TO 14 DAYS CLEAN REMOVAL  
ADHERES TO A VARIETY OF SURFACES

INDOOR/OUTDOOR PAINT MASKING.  
SURFACE PROTECTION. SECURING PE  
SHEETING FOR PROFESSIONAL  
PAINTING AND CLEANING.

Backing/Adhesive	Crepe Paper / Rubber	
Thickness	5.3 mils	0.134 mm
Adhesion to Steel	25 oz/in	2.74 N/cm
Tensile	24 lb/in	42.03 N/cm
Operating Temp	40 - 130 °F	4 - 54 °C
Colors	Blue	
Std Sizes	24mm, 36 mm, 48mm x 55M	

## NASHUA 320 Flatback Paper



MOISTURE AND SOLVENT RESISTANT  
AGGRESSIVE, LONG-TERM BOND  
HIGH TACK ADHESIVE

PAPER SPLICING AND TABBING. FLOOR  
PAD AND CARPET HOLD DOWN.  
PACKAGING AND CARTON SEALING.

Backing/Adhesive	Flatback Paper / Synthetic Rubber	
Thickness	5.6 mils	0.142 mm
Adhesion to Steel	80 oz/in	8.75 N/cm
Tensile	40 lb/in	70.05 N/cm
Operating Temp	40 - 150 °F	4 - 65 °C
Colors	Brown	
Std Sizes	48mm, 72 mm x 55M	

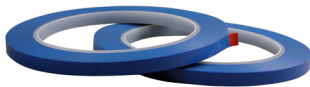
# Fineline Masking Tapes

Patco has been a leader in the OEM and after-market fineline masking tapes industry for decades. Our assortment of PVC and Polypropylene film tapes perform in a variety of paint line and power wash masking uses to produce crisp, clean fineline edges and paint separations. They are designed to withstand moisture, paints, solvents, and high temperature conditions on multiple substrates including plastics and metals.



## PATCO 168

High-Temp Fineline Masking



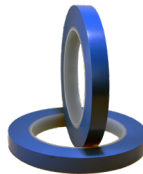
HIGH TEMPERATURE PERFORMANCE  
CONFORMABLE TO HANDLE CURVES AND  
DETAILS FOR CRISP, FINELINE EDGES  
CLEAN REMOVAL AFTER BAKE CYCLES

AUTOMOTIVE OEM AND AFTER-MARKET  
MASKING (RIM AND TPO PLASTICS). PAINT  
LINE AND POWER WASH MASKING. CLEAN  
ROOM USES.

Backing/Adhesive	PVC Film / Rubber	
Thickness	5.0 mil	0.127 mm
Adhesion to Steel	26 oz/in	2.84 N/cm
Tensile	11 lb/in	19.26 N/cm
Operating Temp	40 - 280 °F	4 - 138 °C
Colors	Blue Gloss	
Std Sizes	0.118in - 47.5in x 108Ft	

## PATCO 172

High-Temp Fineline Masking



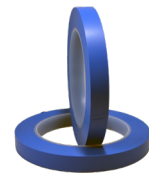
HIGH TEMPERATURE PERFORMANCE  
CONFORMABLE TO HANDLE COMPOUND  
CURVES FOR CRISP, FINELINE EDGES  
CLEAN REMOVAL AFTER BAKE CYCLES

AUTOMOTIVE OEM AND AFTER-MARKET  
MASKING (RIM AND TPO PLASTICS). PAINT  
LINE AND POWER WASH MASKING. CLEAN  
ROOM USES.

Backing/Adhesive	PVC Film / Rubber	
Thickness	7.0 mil	0.178 mm
Adhesion to Steel	20 oz/in	2.19 N/cm
Tensile	17 lb/in	29.77 N/cm
Operating Temp	40 - 280 °F	4 - 138 °C
Colors	Dark Blue Gloss	
Std Sizes	0.118in - 47.5in x 108Ft	

## PATCO 179

High-Temp Fineline Masking



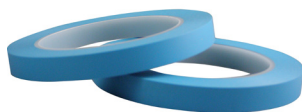
HIGH TEMPERATURE PERFORMANCE  
NON-GLARE FINISH, SOLVENT-RESISTANT  
CONFORMABLE TO HANDLE CURVES  
CLEAN REMOVAL AFTER BAKE CYCLES

AUTOMOTIVE OEM AND AFTER-MARKET  
MASKING FOR COLOR SEPARATIONS ON  
PLASTIC FASCIA, TRIM, AND FINISHED  
METALS. CLEAN ROOM USES.

Backing/Adhesive	PVC Film / Rubber	
Thickness	5.5 mil	0.140 mm
Adhesion to Steel	15 oz/in	1.64 N/cm
Tensile	15 lb/in	26.27 N/cm
Operating Temp	40 - 280 °F	4 - 138 °C
Colors	Matte Lt Blue, Matte Med Blue	
Std Sizes	0.118in - 47.5in x 108Ft	

## PATCO 1676

High-Temp Fineline Masking



HIGH TEMPERATURE PERFORMANCE  
TRANSLUCENT FOR EASY APPLICATION  
MOISTURE AND SOLVENT RESISTANT  
CLEAN REMOVAL AFTER BAKE CYCLES

AUTOMOTIVE OEM AND AFTER-MARKET  
MASKING (RIM AND TPO PLASTICS,  
FIBERGLASS). PAINT LINE AND POWER  
WASH MASKING. CLEAN ROOM USES.

Backing/Adhesive	PVC Film / Rubber	
Thickness	5.5 mils	0.140 mm
Adhesion to Steel	24 oz/in	2.63 N/cm
Tensile	16 lb/in	28.02 N/cm
Operating Temp	40 - 280 °F	4 - 138 °C
Colors	Low Gloss Lt Blue	
Std Sizes	0.118in - 47.5in x 108Ft	

## PATCO 1776

Low-Stretch Fineline Masking



EXTREME HIGH TEMP PERFORMANCE  
TOUGH AND CONFORMABLE  
MOISTURE AND SOLVENT RESISTANT  
REPOSITIONABLE AND CLEAN REMOVAL

AUTOMOTIVE OEM AND AFTER-MARKET  
MASKING (RIM AND TPO PLASTICS). PAINT  
LINE AND POWER WASH MASKING. CLEAN  
ROOM USES.

Backing/Adhesive	PVC Film / Rubber	
Thickness	5.5 mils	0.140 mm
Adhesion to Steel	22 oz/in	2.41 N/cm
Tensile	17 lb/in	29.77 N/cm
Operating Temp	40 - 325 °F	4 - 163 °C
Colors	Matte Yellow	
Std Sizes	0.118in - 55.5in x 108Ft	

## PATCO 3305

Polypropylene Fineline Masking



HIGH TEMPERATURE PERFORMANCE  
TRANSLUCENT FOR EASY APPLICATION  
CRISP, FINELINE EDGE  
REPOSITIONABLE AND CLEAN REMOVAL

AUTOMOTIVE OEM AND AFTER-MARKET  
FINELINE COLOR SEPARATIONS. MASKING  
PLASTIC, ALUMINUM, STEEL, FIBERGLASS.

Backing/Adhesive	Embossed PP Film / Urethane	
Thickness	5.0 mils	0.127 mm
Adhesion to Steel	30 oz/in	3.28 N/cm
Tensile	13 lb/in	22.77 N/cm
Operating Temp	-40 - 250 °F	-40 - 121 °C
Colors	Transparent Green	
Std Sizes	0.125in - 48in x 180Ft	



# Packaging & Filament Tapes

Known in the packaging industry for our expertise in rigid and flexible packaging materials, Berry proudly offers a core assortment of tapes for warehouse carton sealing, unitizing, and wrapping.



## POLYKEN 803 Utility Carton Sealing



HIGH-TACK SYNTHETIC RUBBER ADHESIVE  
DURABLE POLYPROPYLENE FILM BACKING  
GOOD ALL-TEMPERATURE PERFORMANCE

SEALING OF LIGHTWEIGHT BOXES SUBJECT TO NORMAL SHIPPING HAZARDS. IDEAL FOR HAND APPLICATION.

Backing/Adhesive	BOPP Film / Synthetic Rubber	
Thickness	1.6 mils	0.041 mm
Adhesion to Steel	44 oz/in	4.81 N/cm
Tensile	22 lb/in	38.53 N/cm
Operating Temp	30 - 120 °F	-1 - 48 °C
Colors	Clear	
Std Sizes	48mm x 50M, 48mm x 110M	

## POLYKEN 813M Multi-Purpose Carton Sealing



HIGH-TACK SYNTHETIC RUBBER ADHESIVE  
DURABLE POLYPROPYLENE FILM BACKING  
GOOD ALL-TEMPERATURE PERFORMANCE

SEALING OF LIGHTWEIGHT BOXES SUBJECT TO NORMAL SHIPPING HAZARDS. IDEAL FOR HAND APPLICATION.

Backing/Adhesive	BOPP Film / Synthetic Rubber	
Thickness	1.9 mils	0.048 mm
Adhesion to Steel	46 oz/in	5.03 N/cm
Tensile	22 lb/in	38.53 N/cm
Operating Temp	30 - 120 °F	-1 - 48 °C
Colors	Clear	
Std Sizes	48mm x 50M, 48mm x 110M	

## POLYKEN 704 Multi-Purpose Filament



EXCELLENT ADHESION TO SURFACES  
SUPERIOR TENSILE STRENGTH  
LOW-ODOR ADHESIVE

LIGHT-DUTY STRAPPING, UNITIZING, AND PACKAGING APPLICATIONS. SECURES GOODS FOR TRANSPORT.

Backing/Adhesive	OPP-Filament / Synthetic Rubber	
Thickness	4.5 mils	0.114 mm
Adhesion to Steel	90 oz/in	9.85 N/cm
Tensile	110 lb/in	192.64 N/cm
Operating Temp	-22 - 130 °F	-30 - 55 °C
Colors	Clear	
Std Sizes	12mm, 18mm, 24mm x 55M	

# Ludlow Tape®

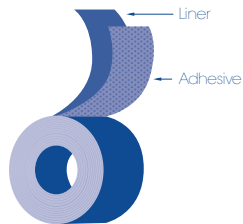
Ludlow Tape offers an extensive line of pressure-sensitive double-coated and transfer tapes designed to meet the unique performance needs of packaging, bonding, laminating, and mounting applications.

Ludlow Tape products are designed for easy, efficient processing, and clean cutting to avoid costly application delays. With our user-friendly “finger-lift edge,” end users can expect a simple, hassle-free experience. **Contact your area sales manager to learn about the core assortment shown below and our full offering of Ludlow Tape products.**

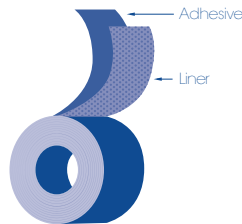


## Transfer Tapes

- Unsupported
- GSI Synthetic Rubber - Permanent or Removable
- GSO Acrylic - Permanent



Acrylic  
Permanent or Removable  
GSI - Gum-Side In



Synthetic Rubber  
Permanent or Removable  
GSO - Gum-Side Out

### Transfer Tape Applications:

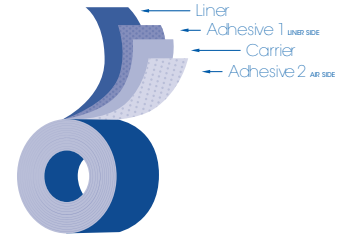
- Envelope sealing and direct mail pieces
- Paper to paper attachments
- Labels and business forms
- Permanent or temporary mounting
- Paper web splicing
- High speed presses and applicators
- Spot and strip tape applications

## M-Tak®

- PET Film-Supported
- Synthetic Rubber
- Permanent
- HI-LO (Permanent/Removable)

### M-Tak Applications:

- Corrugated mailer sealing
- Sealing SBS chipboard packaging
- POP signs and tag mounting
- Shelf talker and danglers
- Permanent or temporary mounting



## T-Tak®

- Tissue-Supported
- Synthetic Rubber
- Permanent

### T-Tak Applications:

- Mounting heavy signs and posters
- Attaching promotional displays
- Mounting tags, labels, and name plates
- Permanent closure for boxes and poly bags
- Fabricating board boxes and envelopes
- Splicing paper web materials

Product/ Adhesive Code	Roll Width (in)	Adhesive Width (in)	Roll Length (ft)	Tape Thickness (mil)	Typical Roll Diameter	Rolls Per Case	Case Weight (lb)
<b>GSO Permanent—42# Liner</b>							
7320L (HM800)	0.50	0.3125	4500	1.0	15.8	10	35
<b>M-Tak—54# Liner</b>							
0235 (HM805)	1.50	1.25	2000	6.4	17.6	3	35
7430L (HM805)	1.75	1.50	2200	5.9	17.9	100/pallet	N/A
<b>HBS M-Tak—54# Liner</b>							
7460 (HM805)	1.75	1.50	1200	12.7	17.4	3	44
<b>M-Tak OS—54# Liner</b>							
7434B-Side A (HM805)	1.75	1.25	1300	9.7	13.0	100/pallet	N/A
7434WW (HM805)	1.75	1.50	1300	9.7	13.0	100/pallet	N/A
<b>M-Tak Shelf Talker HD—54# Liner</b>							
7178 (HM808)	0.875	0.875	2500	4.1	16.8	6	45
<b>T-Tak—42# Liner</b>							
0321 (HM806)	0.50	0.25	2000	3.7	14.0	10	22
0322 (HM806)	0.75	0.50	2000	3.7	14.0	7	25
7311 (HM806)	0.50	0.25	1300	3.7	11.5	10	15

# ADCHEM

The adhesive tape engineers®

Since its founding in 1965, Adchem has manufactured hundreds of millions of square yards of high performance pressure sensitive adhesive tapes. The Adhesive Tape Engineers at Adchem utilize their materials and process expertise in the design, development, and manufacture of single- and double-sided tapes, transfer tapes, foam tapes, and custom coatings for a variety of industries.

**Abrasives & Polishing • Automotive • Construction • Electronics  
Flexographics • Gaskets & Seals • Graphics • Medical  
NVH Packaging • Skin Contact • Sterilization Pouches • Transportation  
Vibration Damping • Weather Stripping • Wide Format Print Mounting**

Contact your area sales manager to learn about the core assortment shown below and our full offering of Adchem products.



Proud Members: GFA, AAMA, TAPPI, AIMCAL, PSTC

## Coating & Converting:

Width Capability: 44" to 63" coated  
Adhesive Thickness: 0.7 to 5.0 mils  
Slitting (up-charges may apply)  
A2LA accredited lab

## Adhesive Systems:

100% Solids Acrylics & Rubbers  
Solution / Emulsion Acrylics & Rubbers

## Backings/Carriers:

Films (PP, PET, PE)  
Tissues  
Papers  
Foams  
Foil

## Release Liners:

Densified Kraft Paper (55#, 60#, 80#)  
Poly-Coated Paper (61#, 74#)  
12-Point Board  
Films (1 – 5 mil PET, PE, PP)

Product	Adhesive Code	Adhesive Thickness (LS)	Adhesive Thickness (AS)	Carrier (Web)	Liner Options	Standard Widths	Key Attributes & Common Applications
<b>Double-Coated Tapes</b>							
3175M	Rubber (I915) / Rubber (I917)	1.3	1.5	1/2-MIL PET	60# SCK	54"	General purpose; Economical; PU and PE foams and felt
3600A	Acrylic (I618)	1.2	1.2	1/2-MIL PET	60# SCK	60"	General purpose
654M	Acrylic (I626)	2.0	2.0	1/2-MIL PET	74# PCK; 12PT	54"	Excellent foam bonding adhesive for PU foams and low surface energy materials; Very conformable; Low VOC
2754T	Acrylic (I642)	4.9 (Adhesive & Carrier)	N/A	Non-Woven	74# PCK	54"	High tack; Ideal for low VOC and low surface energy materials
5944M	Rubber (I915) / Acrylic (I623)	1.3	1.5	1/2-MIL PET	74# PC; 12PT	44" & 54"	Neoprene sponge rubber, cork, rubber, and PU foams
3222S	Acrylic (I610) / Rubber (I903)	0.8	1.7	1/2-MIL PET	80# SCK	60"	A/S: Permanent bond foam and plastic; L/S: Low peel
<b>Transfer Tapes</b>							
7336A	Rubber (I917)	1.4	N/A	N/A	74# PCK	54"	PU and cross-linked PE foams; Ideal for low stress applications
1142S	Acrylic (I645)	3.5 (Adhesive & Scrim)	N/A	N/A	55# Glassine	60"	Auto interior; Non-wovens, felts, foams, and fabrics
3000-2	Acrylic (I607)	2.0	N/A	N/A	80# SCK	60"	Excellent adhesion to foam and plastic; Good humidity and stress resistance; Resists plasticizer migration
653	Acrylic (I626)	3.0	N/A	N/A	74# PCK	54" & 60"	Foam-to-foam; Low surface energy materials; Low VOC
7603	Acrylic (I637)	3.0	N/A	N/A	2 MIL PET	54"	Bonds to highly plasticized vinyl; Exhibits some short-term repositionability
7832	Acrylic (I639)	2.0	N/A	N/A	74# PCK	54"	Ether and ester foams, and low-perm PU foams; Foam-to-Foam; Contains biostatic/antimicrobial



# Specification Table

To learn more about these and other critical industry standards, contact your area sales representative.

SPECIFIER	SPECIFICATION NO.	PRODUCT NO.
AAMA	711-13	Polyken 626-35, 627-20, 627-35, 630-14
	810.1	Adchem GT-192/292/492, HF-295/395
	813.16	Adchem MTB-190, MTB-290
ASME	NQA-1	Polyken 226 Nashua 398N, 357N
FAA	FAR 25.853(a)	Polyken 345SW, 347, 330X
Military	A-A-1689B, Type II	Patco 152
	A-A-59163 Type I & II	Nashua Stretch & Seal
	A-A-58092	Polyken 509W, 510W, 513W
	ASTM D-5486 Type IV, Class 1	Polyken 231, 273
	PPP-T-60E	Polyken 231, 273
	L-T-80B	Polyken 345SW, 347
	SAE AMS-T-23397B	Polyken 345SW, 347
NFPA	701	Polyken 947FR, 949FR
NRC	Reg 1.38	Polyken 226 Nashua 398N, 357N
Underwriters Laboratories	UL 510 Classified	Polyken B17, 777 Polyken 823 Nashua Stretch & Seal
	UL 723 Classified	Polyken 337, 332, 330X, 438, 360-17 Nashua 322, 330X, 438, 327
UPC, ANSI, IAPMO		Polyken 711D
Automotive OEM	Various	Adchem - call for details
Aerospace OEM	Various	Polyken & Patco - call for details

# Duct Tape Selection Guide

Sorted by thickness, adhesion and tensile, use our duct tape selection guide to choose the product that meets your performance criteria.

Brand	Product	Description	Thickness		Adhesion to Steel		Tensile	
			mils	mm	oz/in	N/cm	lb/in	N/cm
Nashua	<b>349</b>	Super Premium Duct Tape	16.0	0.406	55	6.02	48	84.06
Nashua	<b>357</b>	Premium Grade - High Strength	13.0	0.330	95	10.39	50	87.56
Polyken	<b>253</b>	Premium Grade - High Strength	13.0	0.330	95	10.39	50	87.56
Nashua	<b>357N</b>	Premium Nuclear Grade - Easy Tear	13.0	0.330	95	10.39	50	87.56
Nashua	<b>354</b>	Premium Grade	13.0	0.330	50	5.47	29	50.79
Polyken	<b>231</b>	Premium, Military Grade - ASTM D-5486	12.0	0.305	95	10.39	50	87.56
Polyken	<b>222</b>	Premium Grade - High Adhesion	12.0	0.305	90	9.85	36	63.05
Polyken	<b>229</b>	Premium Grade - High Adhesion	12.0	0.305	90	9.85	27	47.28
Polyken	<b>273</b>	Premium, Military-Grade, Lusterless - ASTM D-5486	12.0	0.305	60	6.56	55	96.32
Polyken	<b>221</b>	Premium Screen Printing	12.0	0.305	75	8.21	33	57.79
Nashua	<b>345</b>	Professional Grade	12.0	0.305	70	7.66	24	42.03
Polyken	<b>226</b>	Premium Nuclear Grade	12.0	0.305	50	5.47	30	52.54
Polyken	<b>235FR</b>	Flame Retardant	12.0	0.305	40	4.38	29	50.79
Nashua	<b>398</b>	Professional Grade - Available in Colors	11.0	0.279	80	8.75	24	42.03
Nashua	<b>398N</b>	Professional Grade - Nuclear	11.0	0.279	80	8.75	24	42.03
Polyken	<b>227</b>	Professional Grade - High Adhesion	11.0	0.279	70	7.66	24	42.03
Nashua	<b>365</b>	Professional Grade - Metallic	11.0	0.279	70	7.66	23	40.28
Polyken	<b>251</b>	Professional Grade - Metallic	11.0	0.279	70	7.66	23	40.28
Polyken	<b>500</b>	Low-Gloss/AV Cord	10.5	0.267	66	7.22	50	87.56
Polyken	<b>281</b>	Moisture Barrier	10.5	0.267	43	4.70	32	56.04
Polyken	<b>223</b>	Multi-Purpose - Available in Colors	10.0	0.254	90	9.85	25	43.78
Polyken	<b>244</b>	Multi-Purpose - Abatement Duct Tape	10.0	0.254	80	8.75	24	42.03
Polyken	<b>243</b>	Multi-Purpose-High Adhesion	10.0	0.254	75	8.21	24	42.03
Nashua	<b>300</b>	Multi-Purpose Duct Tape	10.0	0.254	75	8.21	24	42.03
Nashua	<b>396</b>	Multi-Purpose Duct Tape	10.0	0.254	75	8.21	24	42.03
Polyken	<b>213</b>	Multi-Purpose - Clean Removal*	10.0	0.254	50	5.47	22	38.53
Polyken	<b>203</b>	Multi-Purpose - Available in Colors	9.0	0.229	85	9.30	25	43.78
Nashua	<b>2280</b>	Multi-Purpose - Available in Colors	9.0	0.229	70	7.66	24	42.03
Nashua	<b>850UV</b>	UV Resistant Duct Tape	8.5	0.216	62	6.78	21	36.78
Nashua	<b>308</b>	Utility Grade	8.0	0.203	55	6.02	22	38.53
Nashua	<b>307</b>	Utility Grade	7.0	0.178	65	7.11	21	36.78

\*From Most Surfaces.

# Film Tape Selection Guide

Grouped by film type, adhesive type, and sorted by thickness, Berry Global offers a full assortment of film tapes for virtually any application.

Product	Adhesive Type	Thickness mils	Adhesion to Steel oz/in	Tensile Strength lb/in	Permeance US Perms	Clean Removal	UV Resistant	Flame Retardant	Page
<b>Polyethylene Film (PE)</b>									
502A/503A	Acrylic	5.5	50	11	N/A	Varies			14
5005	Acrylic	5.5	32	11	N/A		●		15
560	Acrylic	5.5	25	11	N/A	●			15
853	Acrylic	6.0	120	22.5	0.03				14
5067-53	Acrylic w/Lnr	6.0	40	11	N/A	●	●		13
826	Butyl Rubber	12.0	40	25	N/A				16
502R/503R	Rubber	5.5	25	11	N/A	●			12
757	Rubber	7.0	75	25	0.11	●			12
857	Rubber	7.0	125	25	0.11				14
824	Rubber	7.0	45	20	N/A	●			12
947FR	Rubber	7.0	75	25	0.11	●		●	13
767UV	Rubber	7.0	75	25	0.11	●	●		13
827	Rubber	8.0	60	21	N/A	●			12
801	Rubber	8.0	60	21	N/A	●			15
759	Rubber	9.0	85	30	0.10	●			12
859	Rubber	9.0	134	33	0.09	●			14
5400	Rubber	9.0	25	17	N/A		●		13
949FR	Rubber	9.0	85	30	0.10			●	13
769UV	Rubber	9.0	85	32	0.11	●	●		13
823	Rubber	9.5	31	17	N/A				16
820 MEGAGRIP	Rubber w/Lnr	20.0	115	10	0.10				14
<b>Polyester Film (PET)</b>									
781	Silicone	2.8	35	25	N/A				17
784	Silicone w/Lnr	3.0	35	25	N/A				17
784SW	Silicone	3.0	45	25	N/A				17
6033	Silicone	3.5	28	50	N/A				17
6035	Silicone	3.5	30	45	N/A				17
<b>Polypropylene Film (PP)</b>									
3305	Urethane	5.0	30	13	N/A	●			25
<b>Polyurethane Film (PU)</b>									
8210	Acrylic	14.5	110	80	N/A		●		15
8100	Urethane	9.4	45	70	N/A				15
<b>Polyvinyl Chloride Film (PVC)</b>									
168	Rubber	5.0	26	11	N/A	●			25
179	Rubber	5.5	15	15	N/A	●			25
1676	Rubber	5.5	24	16	N/A	●			25
1776	Rubber	5.5	22	17	N/A	●			25
152	Rubber	6.0	18	18	N/A	●			12
777	Rubber	7.0	20	18	N/A				16
B17	Rubber	7.0	25	20	N/A				16
172	Rubber	7.0	20	17	N/A	●			25
711D	Rubber	12.0	15	20	N/A				16



# Foil Tape Selection Guide

Grouped by adhesive type followed by foil thickness, Nashua and Polyken offers a full assortment of foil tapes for virtually any application.

Product	Adhesive	Liner	Foil Thickness	Total Thickness (w/o Liner)	Adhesion to Steel	Tensile Strength	Operating Temperature Range	Code Approvals
			mils	mils	oz/in	lb/in	°F	
<b>230X/340X Extreme Weather</b>	Acrylic	Brown Kraft Paper	1.5	3.0	45	11	-35 to 260	Tested in accordance with UL 723
<b>332</b>	Synthetic Rubber	Brown Kraft Paper	1.5	3.2	75	11	40 to 200	UL 723 Classified
<b>337</b>	Synthetic Rubber	Brown Kraft Paper	1.75	3.7	100	14	40 to 200	UL 723 Classified
<b>322</b>	Synthetic Rubber	Brown Kraft Paper	2.0	5.0	130	15	40 to 200	UL 723 Classified
<b>330X Extreme Weather</b>	Acrylic	Brown Kraft Paper	1.75	3.5	55	14	-35 to 260	UL 723 Classified
<b>335FT</b>	Acrylic	Brown Kraft Paper	1.75	3.8	35	14	-50 to 500	Tested in accordance with UL 723
<b>345SW</b>	Acrylic	None	3.0	5.0	68	26	-40 to 350	L-T-80B, SAE AMS-T 23397B
<b>338/FSK</b>	Synthetic Rubber	Brown Kraft Paper	N/A	9.25	75	30	40 to 200	Tested in accordance with UL 723
<b>438 Extreme Weather FSK</b>	Acrylic	Brown Kraft Paper	N/A	9.5	75	33	-35 to 260	UL 723 Classified
<b>348/ASJ</b>	Acrylic	Brown Kraft Paper	N/A	11.0	50	45	-35 to 260	Tested in accordance with UL 723
<b>358WMP</b>	Acrylic	Brown Kraft Paper	N/A	8.8	50	45	-35 to 260	Tested in accordance with UL 723
<b>361-11</b>	Butyl Rubber	Blue LDPE	2.0	11.0	75	20	20 to 200	N/A
<b>360-17</b>	Butyl Rubber	Blue LDPE	2.0	17.0	200	20	40 to 200	UL 723 Classified
<b>327</b>	Butyl Rubber	White LDPE	2.0	17.0	200	20	40 to 200	UL 723 Classified
<b>360-35</b>	Butyl Rubber	Blue LDPE	2.0	35.0	160	20	40 to 200	Tested in accordance with UL 723
<b>360-45</b>	Butyl Rubber	Blue LDPE	2.0	45.0	63	20	40 to 200	Tested in accordance with UL 723
<b>334CRT/314CRT Foil Laminate</b>	Acrylic	Kraft Paper	N/A	10.2	100	70	-30 to 270	Tested in accordance with UL 723

# Shelf Life and Storage

Products should be stored in the original dry carton, off of the floor, in a well-ventilated area with temperatures from 60-80 °F at 40-60% relative humidity.

Description	Product Families	Shelf Life
Duct Tapes (Slit Rolls)	203, 213, 221, 222, 223, 226, 227, 229, 231, 243, 244, 251, 253, 273, 281, 500, 235FR 307, 308, 2280, 300, 365, 396, 398, 345, 354, 357, 349, 398N, 357N, 850UV	3 years from DOM
Double-Coated Cloth Tapes	105C, 100D, Fastfloor, CleanDrape Shear	2 years from DOM
Gaffer's Tapes (Slit Rolls)	510, 512	1 year from DOM
Foil & Insulation Tapes	230X, 322, 330X, 332, 337, 338, 335FT, 340X, 348, 358WMP, 438, 360 Series, 361-11, FSK, ASJ	3 years from DOM
Cooler Repair Tape	314CRT, 334CRT	1 year from DOS
Foil Surface Protection	345SW, 347	2 years from DOM
Housewrap/Sheathing Tapes	629	2 year from DOM
Polyken PE Film Tapes	737UV, 739UV, 747, 749, 757, 759, 767UV, 769UV, 801, 809, 820 MEGAGRIP, 823, 824, 826, 827, 836, 853, 857, 859, 860, 947FR, 949FR	2 years from DOM
Patco PE Film Tapes	502A, 503A, 502R, 503R, 5005, 5067-53, 560, 5400	1 year from DOS
PU Film Tapes	8100, 8210	1 year from DOS
Polyken PET Splicing Tape	065, 066, 781, 784, 126, 726	2 years from DOM
Patco PET Splicing Tape	6033, 6035	1 year from DOS
Spray Adhesives	44SA, 398SA, 357SA	1 year from DOM
Flashing Tapes	626-20, 626-35, 627-20, 627-35, 630-14	3 years from DOM
Packaging Tapes	803, 813M, 704	1 year from DOM
Paper Masking Tapes	MT100, MT300, 140B, CleanDrape, 320	1 year from DOM
Patco Fineline Masking	168, 172, 179, 1676, 1776, 3305	1 year from DOS
PVC & Silicone Tapes	711D, 777, Stretch & Seal, 152	1 year from DOS
PVC/Electrical Tapes	B17	5 years from DOM
Ludlow Tapes		3 years from DOM
Adchem Tapes		1 year from DOS

# Product Index

065/066	Acrylic Transfer Adhesive Tape	17	338	FSK Insulation Jacketing Tape	19
44SA	Premium Web Spray Adhesive	11	340X	Utility Extreme Weather Foil Tape	18
100D	13 mil Premium DC Cloth Tape	10	345	12 mil Premium Grade Duct Tape	7
102	Asbestos-Free Sealant Compound	16	345SW	Heavy-Duty Self Wound Foil Tape	18
105C	11 mil Multi-Purpose DC Cloth Tape	10	348	ASJ Insulation Jacketing Tape	19
126/726	Double-Coated PET Splicing Tape	17	349	16 mil Super Premium Duct Tape	7
140B	Premium 14-Day Painter's Masking Tape	24	354	13 mil Premium Grade Duct Tape	7
152	PVC Aisle Marking/Color Coding Tape	12	357	13 mil Premium Grade Duct Tape	7
168	High-Temp Finline Masking Tape	25	357N	13 mil Premium Nuclear Duct Tape	8
172	High-Temp Finline Masking Tape	25	357SA	Premium Web Spray Adhesive	11
179	High-Temp Finline Masking Tape	25	358WMP	ASJ-WMP Insulation Jacketing Tape	19
203	9 mil Multi-Purpose Duct Tape	4	360-17	Foilmastic® Butyl Sealant Tape	19
213	10 mil Multi-Purpose Duct Tape	4	360-35	Foilmastic® Butyl Sealant Tape	23
221	12 mil Screen Printing Duct Tape	5	360-45	Foilmastic® Butyl Sealant Tape	23
222	12 mil Premium Grade Duct Tape	5	361-11	Waterproofing Repair Tape	21
223	10 mil Multi-Purpose Duct Tape	4	365	11 mil Professional Grade Duct Tape	7
226	12 mil Premium Nuclear Duct Tape	8	396	10 mil Multi-Purpose Duct Tape	6
227	11 mil Professional Grade Duct Tape	5	398	11 mil Professional Grade Duct Tape	7
229	12 mil Premium Grade Duct Tape	5	398N	11 mil Pro-Grade Nuclear Duct Tape	8
230X	Utility Extreme Weather Foil Tape	20	398SA	Multi-Purpose Web Spray Adhesive	11
231	12 mil Military Grade Duct Tape	8	438 (N)	Extreme Weather FSK Tape	20
235FR	12 mil Flame Retardant Duct Tape	8	438 (P)	Extreme Weather FSK Tape	19
243	10 mil Abatement Duct Tape	4	500	10.5 mil Low-Gloss Duct/AV Cord Tape	9
244	10 mil Abatement Duct Tape	4	502A/503A	5.5 mil Permanent PE Film Tape	14
251	11 mil Professional Duct Tape	4	502R/503R	5.5 mil General Purpose PE Film Tape	12
253	13 mil Premium Grade Duct Tape	5	509/510/513W	PTFE Thread Seal Tape	16
273	12 mil Military Grade Duct Tape	8	510	11.5 mil Premium Gaffer Tape	9
281	11 mil Moisture Barrier Duct Tape	5	512	12 mil Multi-Purpose Gaffer Tape	9
300	10 mil Multi-Purpose Duct Tape	7	560	5.5 mil Removable PE Film Tape	15
307	7 mil Utility Grade Duct Tape	6	626-20	Foilastic® Window & Door Flashing Tape	22
308	8 mil Utility Grade Duct Tape	6	626-35	Foilastic® Roof Flashing Tape	22
314CRT	Foil-Laminate Cooler Repair Tape	21	627-20	Shadowlastic® Plus Window Flashing	22
320	Flatback Paper Tape	24	627-35	Shadowlastic® Plus Roof Flashing Tape	22
322	Multi-Purpose Foil Tape	20	629	Seam & Seal® Housewrap Tape	22
327	Butyl-Mastic Sealing Tape	21	630-14	Shadowlastic® Extreme Window Flashing	22
330X (N)	Premium Extreme Weather Foil Tape	20	704	Multi-Purpose Filament Tape	26
330X (P)	Premium Extreme Weather Foil Tape	18	711	Utility PVC Pipewrap Tape	16
332	Utility Foil Tape	18	757	7 mil Multi-Purpose PE Film Tape	12
334CRT	Foil-Mastic Cooler Repair Tape	19	759	9 mil Heavy-Duty PE Film Tape	12
335FT	Premium High Temp Foil Tape	18	767UV	7 mil Multi-Purpose UV PE Film Tape	13
337	Multi-Purpose Foil Tape	18	769UV	9 mil Heavy-Duty UV PE Film Tape	13



# Product Index

777	7 mil GP Electrical Tape - Black	16
781	PET/Silicone Self Wound Splicing Tape	17
784	PET/Silicone Splicing Tape	17
784SW	PET/Silicone Self Wound Splicing Tape	17
801	8 mil PE Screen Block Tape	15
803	1.6 mil Utility Carton Sealing Tape	26
813M	1.9 mil MP Carton Sealing Tape	26
820	MEGAGRIP® Permanent Waterproof Tape	14
823	Premium PE Electrical Tape	16
824	7 mil Multi-Purpose PE Film Tape	12
826	Premium Butyl Pipewrap Tape	16
827	8 mil Premium PE Film Tape	12
850UV	8.5 mil UV Resistant Duct Tape	6
853	Premium Vapor Barrier Tape	14
857	7 mil Vapor Barrier Tape	14
859	9 mil Vapor Barrier Tape	14
860	Butyl Roadblock Tape	23
947FR	7 mil FR PE Film Tape	13
949FR	9 mil FR PE Film Tape	13
1027	Premium Butyl Brush-on Primer	11
1676	High-Temp Fineline Masking Tape	25
1776	High-Temp Fineline Masking Tape	25
2280	9 mil Multi-Purpose Duct Tape	6
3305	Polypropylene Fineline Masking Tape	25
5005	5.5 mil UV MDPE Film Tape	15
5067-53	6.0 mil PE Greenhouse Repair Tape	13
5400	9 mil UV Preservation & Sealing Tape	13
6033	PET/Silicone Clear Splicing Tape - SW	17
6035	PET/Silicone Metalized Splicing Tape - SW	17
8100	HD Indoor Polyurethane Film Tape	15
8210	HD Outdoor Polyurethane Film Tape	15
ASJ	All-Service Jacketing Insulation Tape	20
B17	7 mil GP PVC Electrical Tape - Colors	16
CleanDrape®	Premium DC Cloth Poly Hanging Tape	10
CleanDrape® Shear	DC Cloth Poly Hanging Tape	10
FastFloor®	DC Cloth Ballroom Carpet Tape	20
FSK	Foil-Scrim-Kraft Insulation Tape	20
MT100	Utility Paper Masking Tape	24
MT300	Multi-Purpose Paper Masking Tape	24
Stretch & Seal®	Self-Fusing Silicone Tape	16



1.800.343.7875 | 508.918.1600 | [berryglobal.com](http://berryglobal.com)